

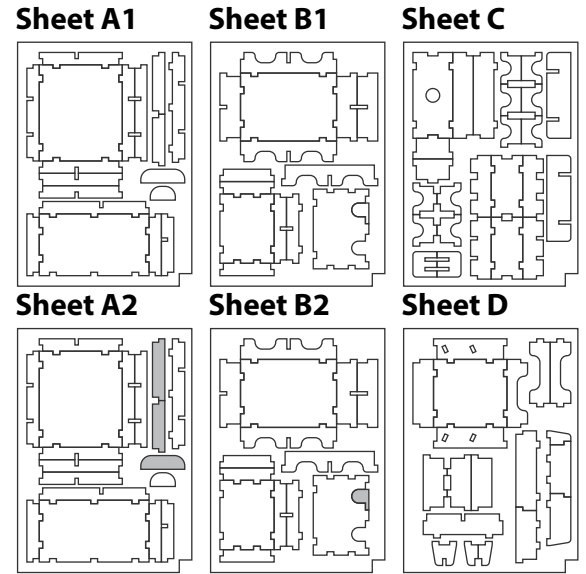
FS-PIPE Insert compatible with Pipeline[®], including the Emerging Markets[®] expansion



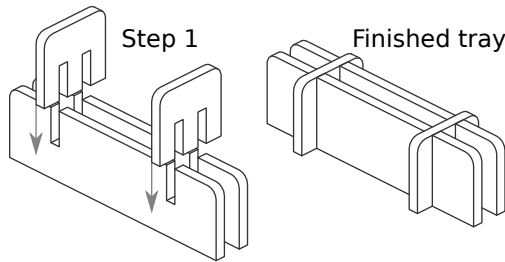
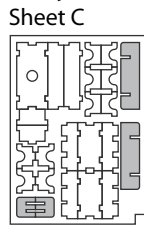
Assembly Instructions

The package contains 6 sheets: two double and two single sheets.
 After assembly the trays are put in two layers in the original game box.
 Ordinary PVA glue is required when assembling each tray.
 Please make sure you dry-assemble each tray correctly before gluing it together.
 Please check www.foldedspace.net for general assembly tips.
 The marked element in sheets A2 & B2 may be discarded.

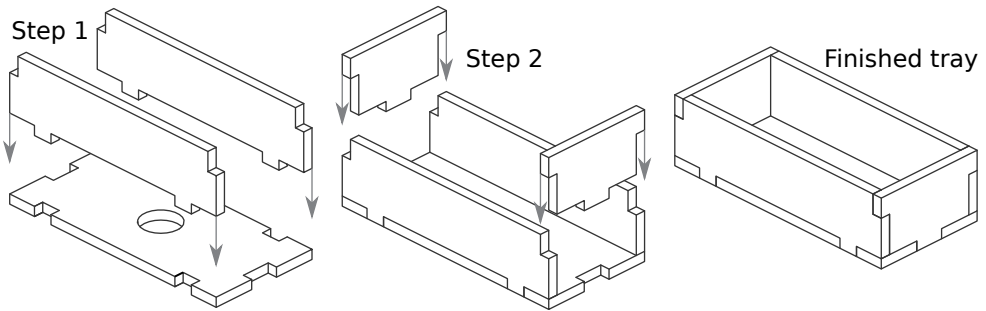
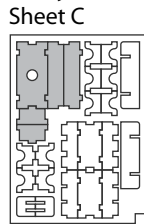
FS-PIPE



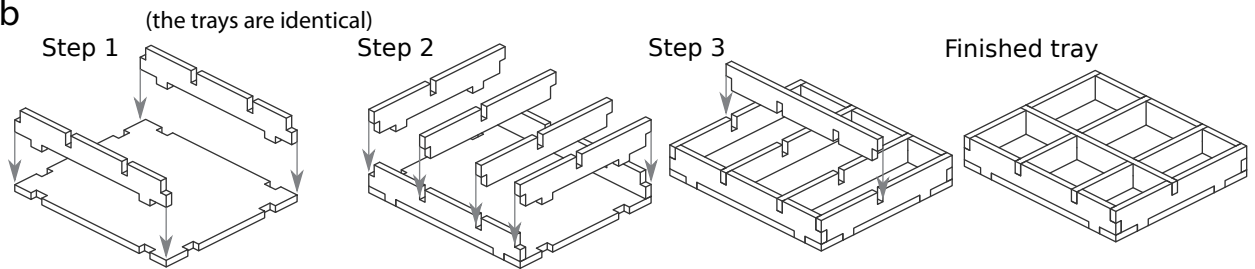
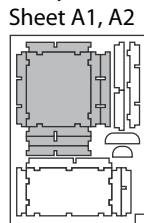
Tray 1



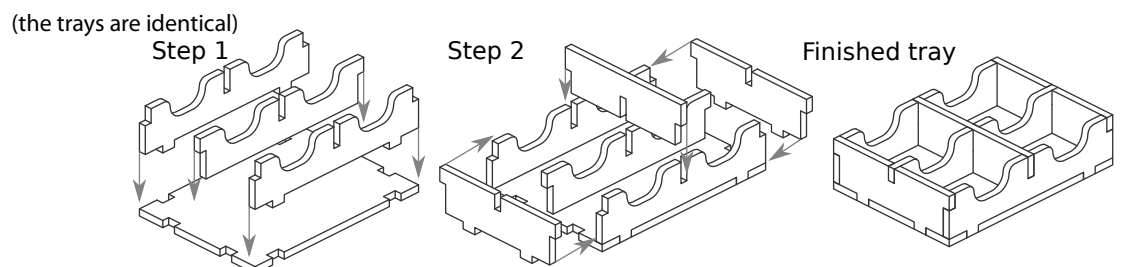
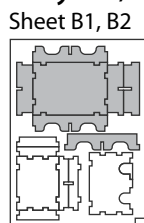
Tray 2



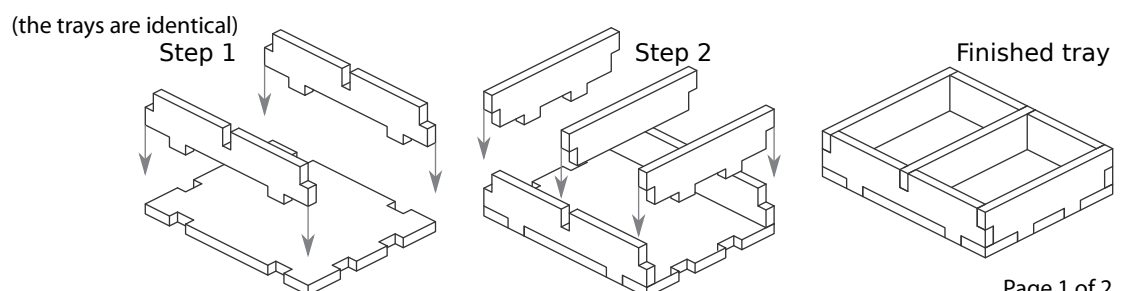
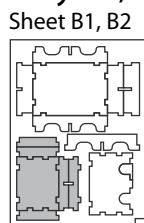
Tray 3a, 3b



Tray 4a, 4b



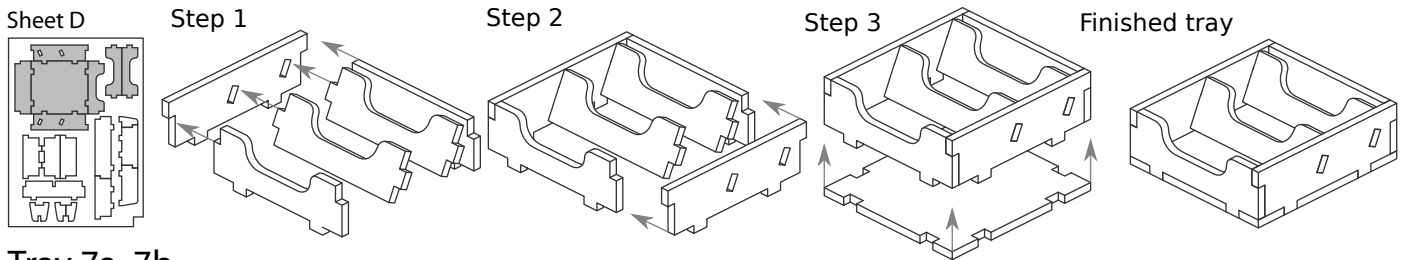
Tray 5a, 5b



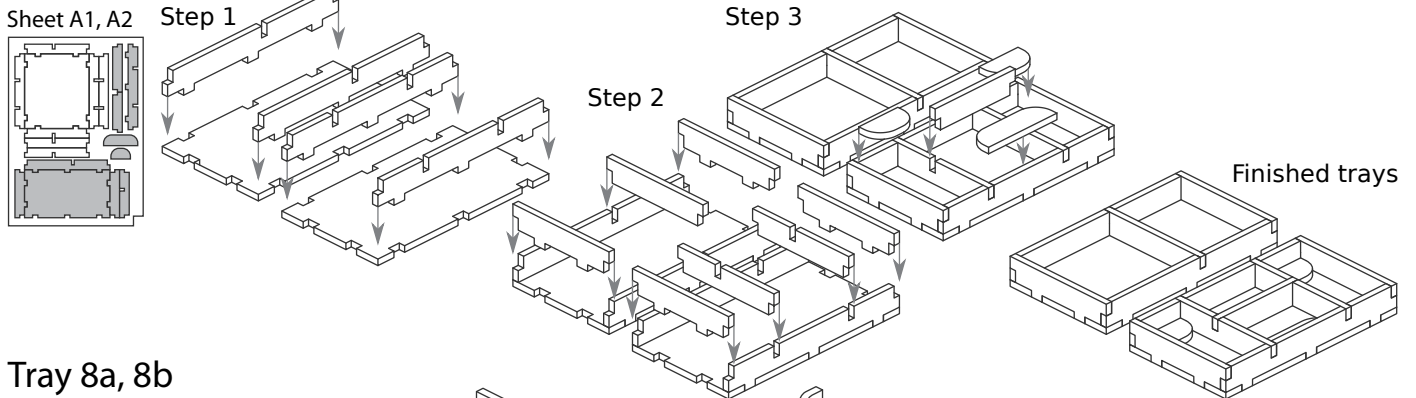
FS-PIPE Insert compatible with Pipeline®, including the Emerging Markets® expansion



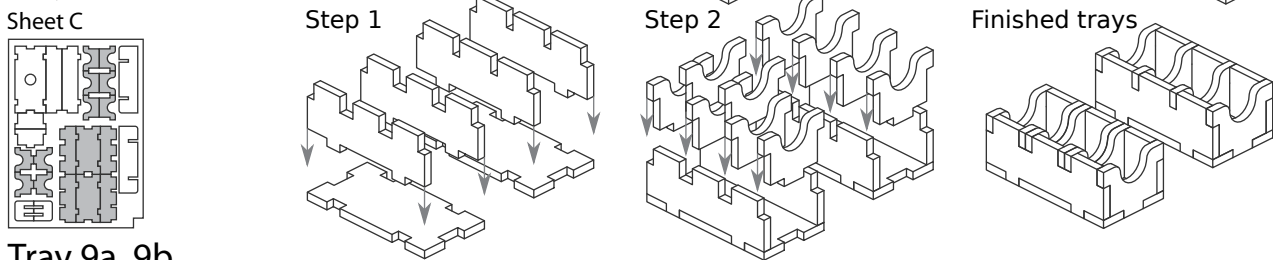
Tray 6



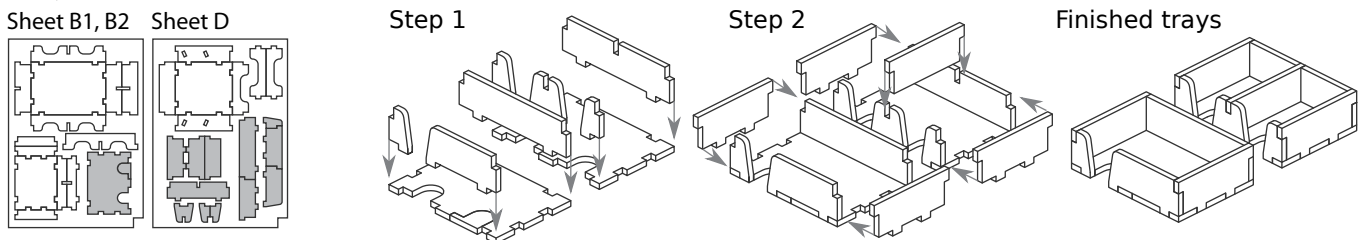
Tray 7a, 7b



Tray 8a, 8b

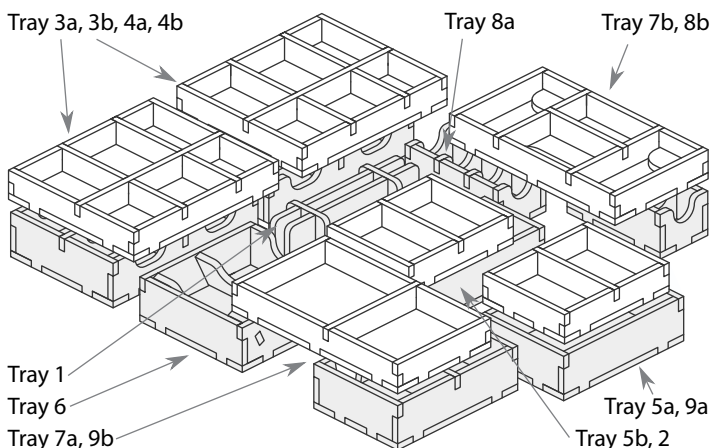


Tray 9a, 9b



Please check www.foldedspace.net for photos of this insert in use.

FS-PIPE



Tray legend:

- Tray 1 - filler tray
- Tray 2 - market overlay tiles
- Tray 3a, b - money tokens
- Tray 4a, b - pipe tiles
- Tray 5a - refinement cost and upgrade tiles
- Tray 5b - player pieces and action tiles
- Tray 6 - refined market tiles
- Tray 7a - machine and tank tiles
- Tray 7b - barrel and penalty cubes
- Tray 8a - order tiles
- Tray 8b - contract tiles
- Tray 9a - valuation cards & tile
- Tray 9b - upgrade and specialization cards

Note: the long crude market tiles are placed on top of the board with the player boards.

Tip: Keep the instructions in the bottom of your board game box as a reminder of how the insert fits together.