

FS-DWRLD

compatible with Dinosaur World®,

incl. the Hybrid Pack, Ice Age Pack and Water Pack expansions



Assembly Instructions

The package contains 4 sheets, two identical and two different sheets.

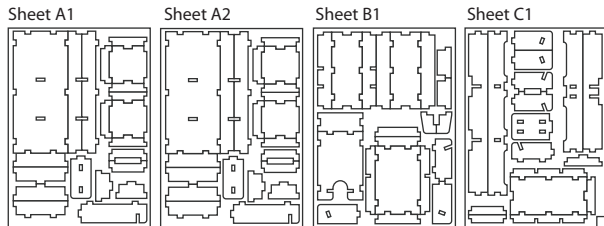
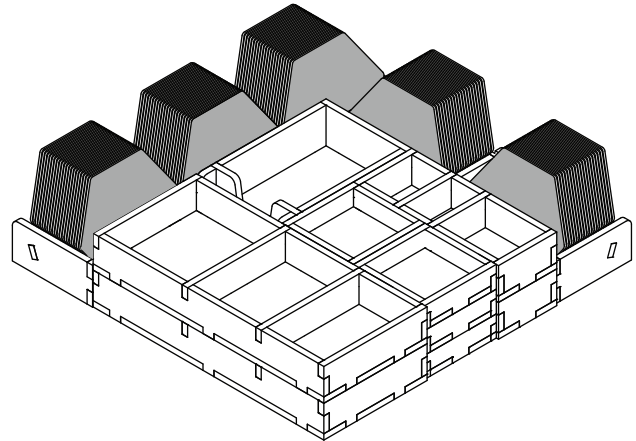
After assembly the trays are put in three layers in the original game box.

Ordinary PVA glue is required when assembling each tray.

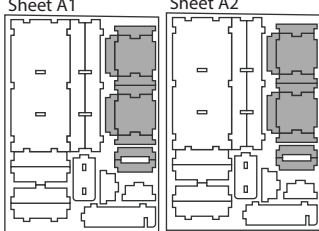
Please make sure you dry-assemble each tray correctly before gluing it together.

Please check www.foldedspace.net for general assembly tips.

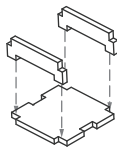
FS-DWRLD



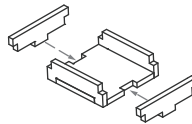
Tray 1a, b, c, d



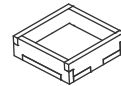
Step 1



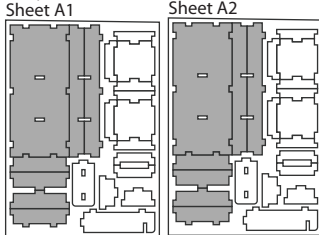
Step 2



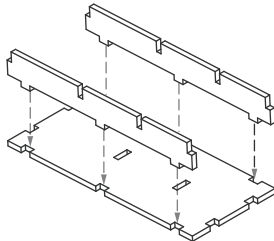
Finished tray



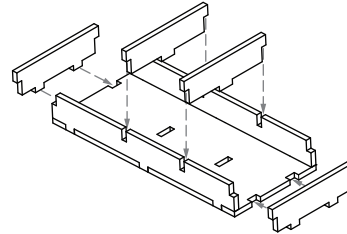
Tray 2a, 2b



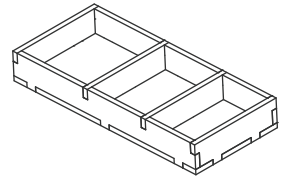
Step 1



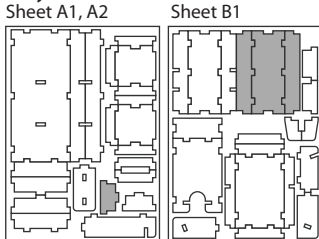
Step 2



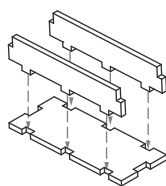
Finished tray



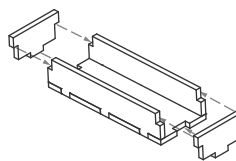
Tray 3



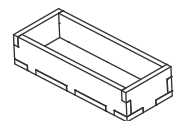
Step 1



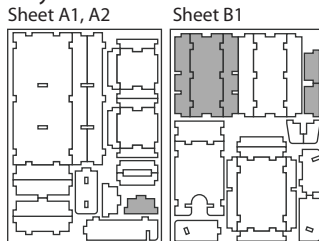
Step 2



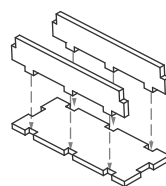
Finished tray



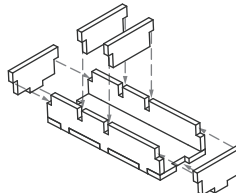
Tray 4



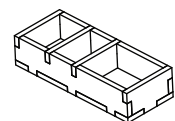
Step 1



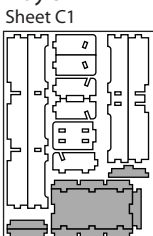
Step 2



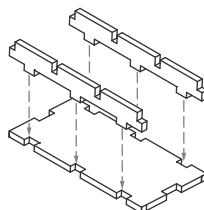
Finished tray



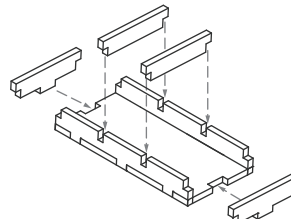
Tray 5



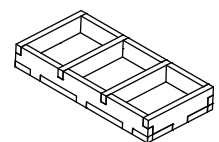
Step 1



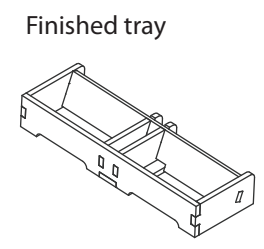
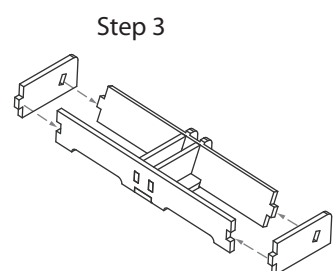
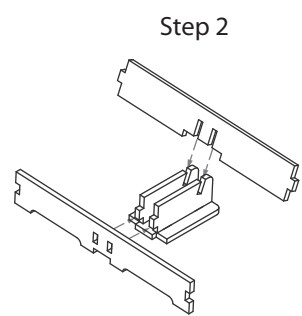
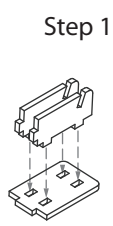
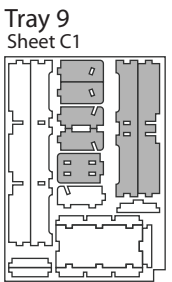
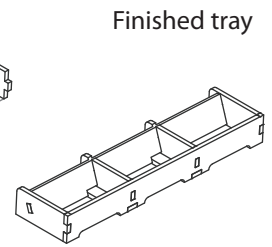
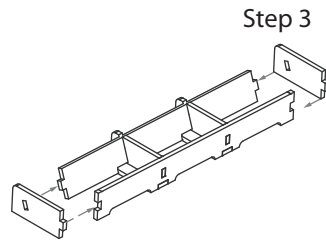
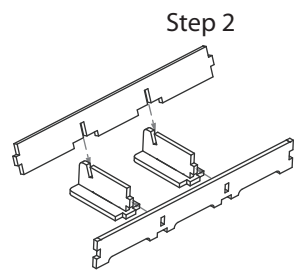
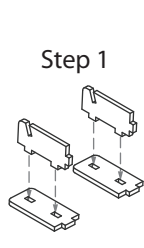
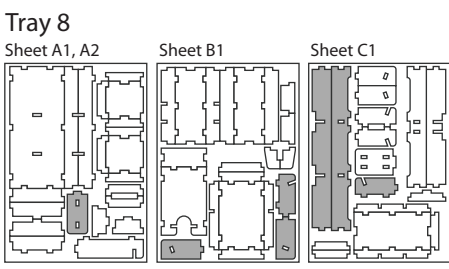
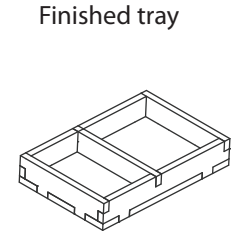
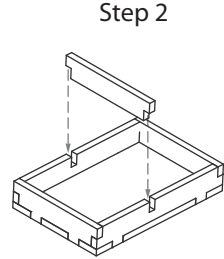
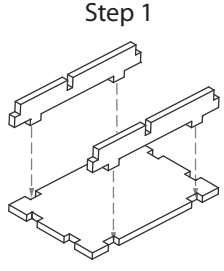
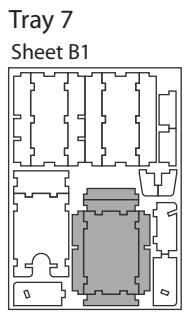
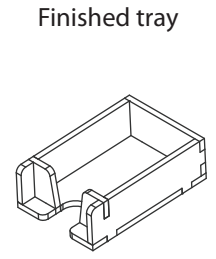
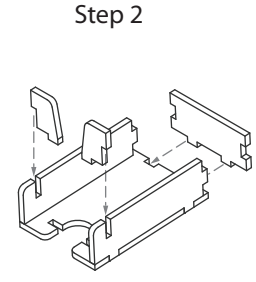
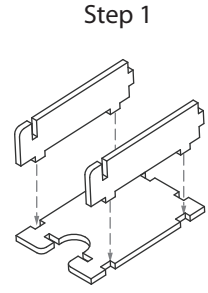
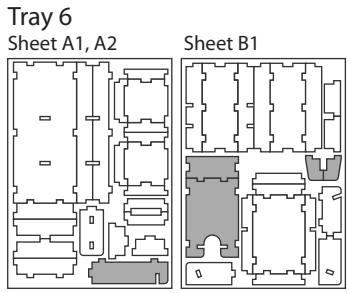
Step 2



Finished tray

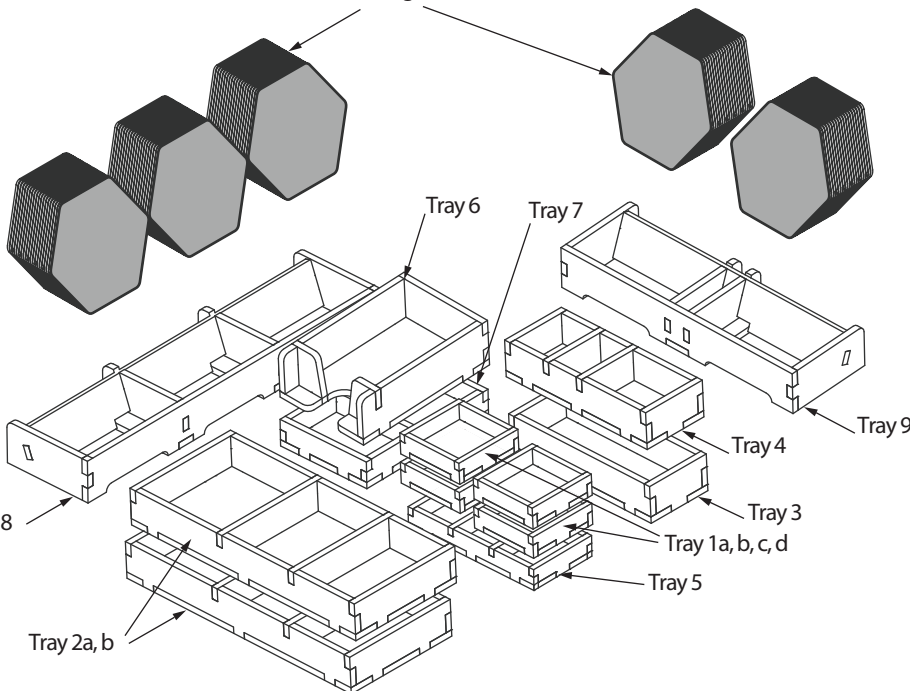


FS-DWRLD insert compatible with Dinosaur World®,
incl. the Hybrid Pack®, Ice Age Pack® and Water Pack® expansions



FS-DWRLD

Building Tiles



Please check www.foldedspace.net for photos of this insert in use.

Tray legend:

- Tray 1a, b, c, d - player pieces
- Tray 2a, b - dino meeples
- Tray 3 - dna dice
- Tray 4 - coins
- Tray 5 - worker meeples
- Tray 6 - cards
- Tray 7 - death tokens, first player marker, danger and expansion dice
- Tray 8 - attraction, special building, and welcome center tiles
- Tray 9 - dino paddock tiles

Note: in Tray 8 split the special building tiles split by A, B or C types. Then the security and roller coaster attractions are added to the A tiles, the welcome centers to the B tiles, and the restaurants and merchandise shops to the C tiles.

Tip: Keep the instructions in the bottom of your board game box as a reminder of how the insert fits together.