

FS-TEOV2 insert compatible with Teotihuacan[®],

including the Late Preclassic Period[®], Shadows of Xitle[®], and Expansion Period[®] expansions



Assembly Instructions

The package contains 4 sheets, two identical and two different sheets.

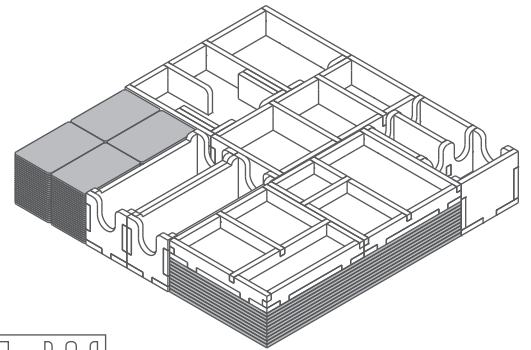
After assembly the trays are put in two layers in the original game box.

Ordinary PVA glue is required when assembling each tray.

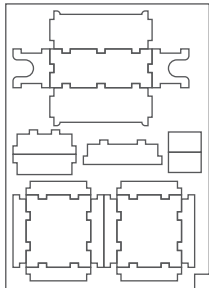
Please make sure you dry-assemble each tray correctly before gluing it together.

Please check www.foldedspace.net for general assembly tips.

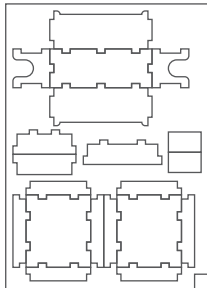
FS-TEOV2



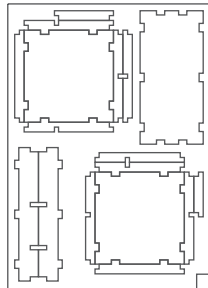
Sheet A1



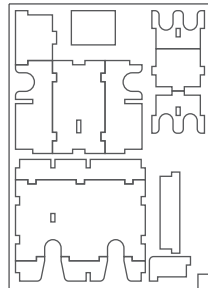
Sheet A2



Sheet B1



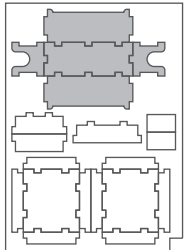
Sheet C1



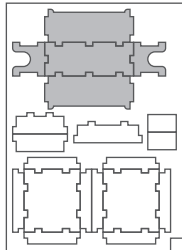
Tray 1a & 1b

(the trays are identical)

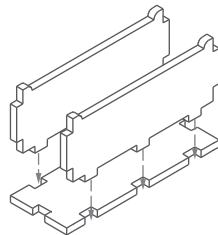
Sheet A1



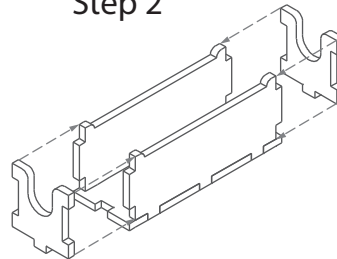
Sheet A2



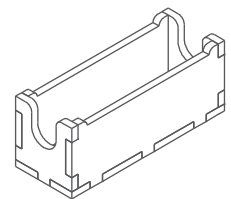
Step 1



Step 2



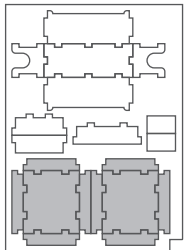
Finished tray



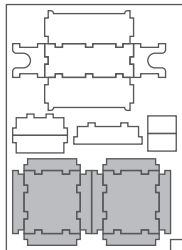
Tray 2a, 2b, 2c & 2d

(the trays are identical)

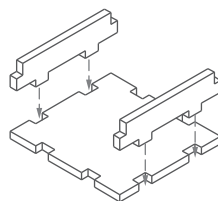
Sheet A1



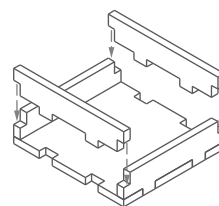
Sheet A2



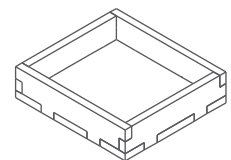
Step 1



Step 2

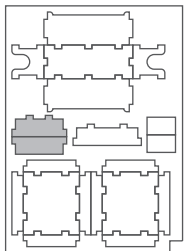


Finished tray

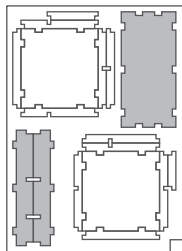


Tray 3

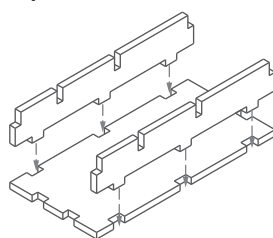
Sheet A1, A2



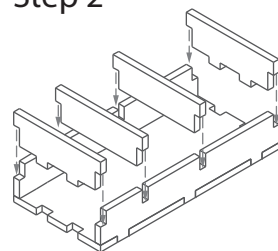
Sheet B1



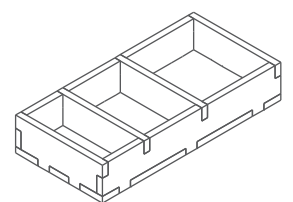
Step 1



Step 2

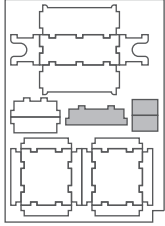


Finished tray

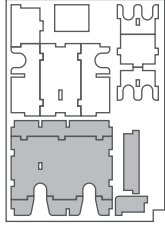


Tray 4

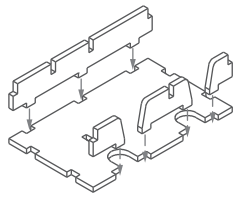
Sheet A1, A2



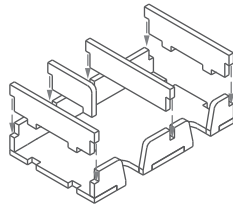
Sheet C1



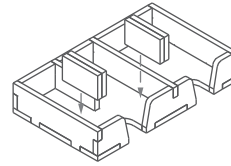
Step 1



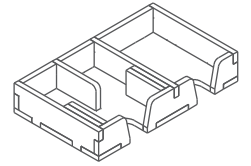
Step 2



Step 3

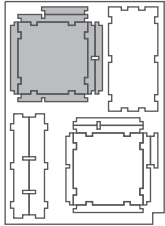


Finished tray

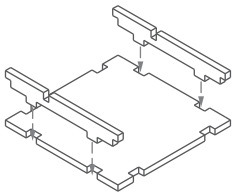


Tray 5a

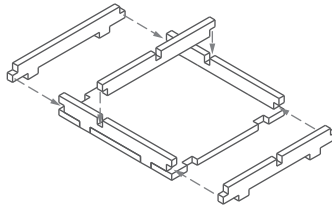
Sheet B1



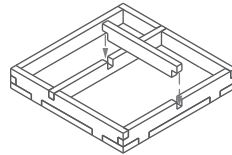
Step 1



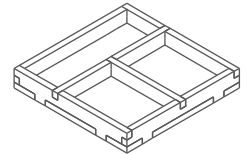
Step 2



Step 3

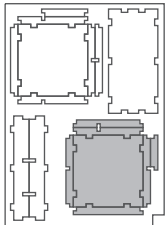


Finished tray

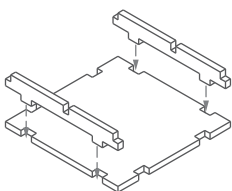


Tray 5b

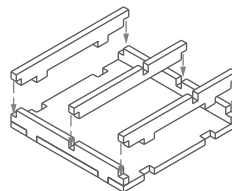
Sheet B1



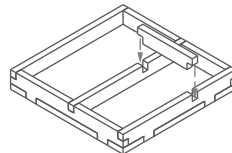
Step 1



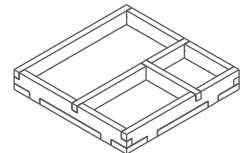
Step 2



Step 3

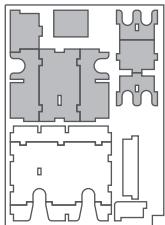


Finished tray

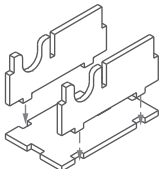


Tray 6

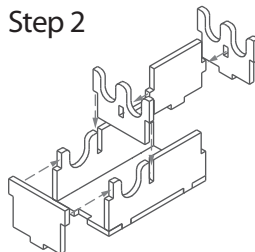
Sheet C1



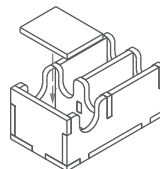
Step 1



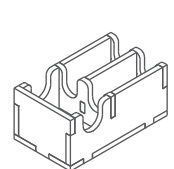
Step 2



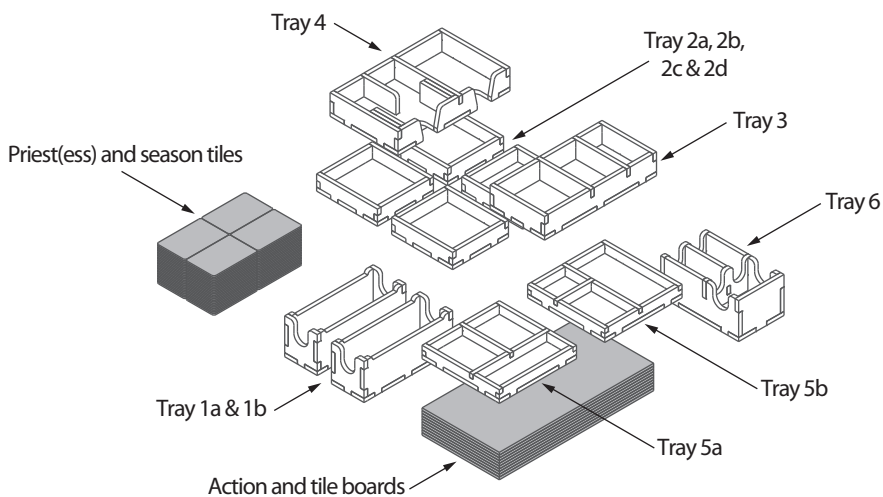
Step 3



Finished tray



FS-TEOV2



Please check www.foldedspace.net for photos of this insert in use.

Tray legend:

- Tray 1a, b - pyramid tiles
- Tray 2a, b, c, d - player pieces
- Tray 3 - obsidian, cocoa, and gold
- Tray 4 - technology, royal, and starting tiles
- Tray 5a - decoration, temple bonus, mansion ownership & special mask tiles, and wooden buildings and discs
- Tray 5b - wood, stone, and solo tiles
- Tray 6 - discovery and major discovery tiles

Note: the four altar tiles are placed in the recess on the top of Trays 1a & 1b.