

FS-PND insert
 compatible with Pandemic®,
 incl. On the Brink®, In the Lab®, and State of Emergency® expansions



Assembly Instructions

The package contains 2 sheets.

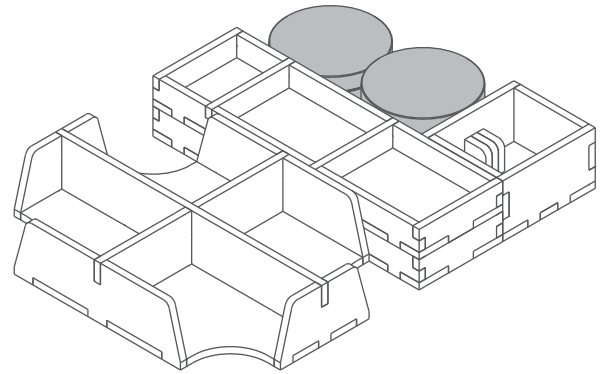
After assembly the trays are put in two layers in the original game box.

Ordinary PVA glue is required when assembling each tray.

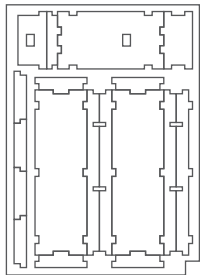
Please make sure you dry-assemble each tray correctly before gluing it together.

Please check www.foldedspace.net for general assembly tips.

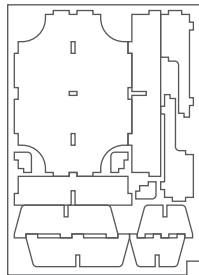
FS-PND



Sheet A1

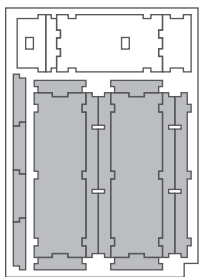


Sheet B1

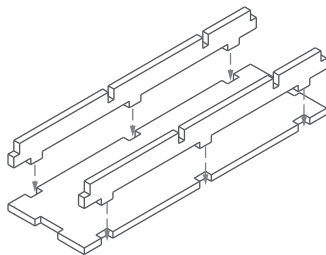


Tray 1a & 1b (the trays are identical)

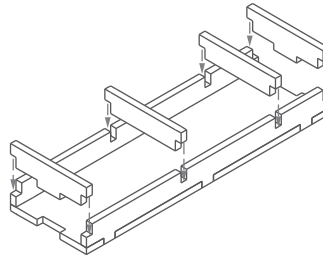
Sheet A1



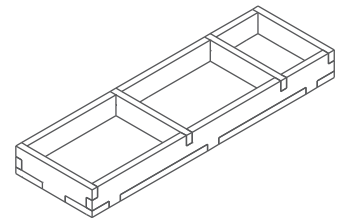
Step 1



Step 2

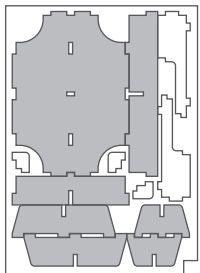


Finished tray

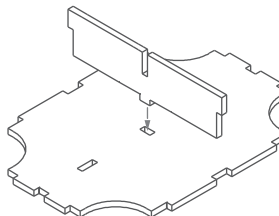


Tray 2

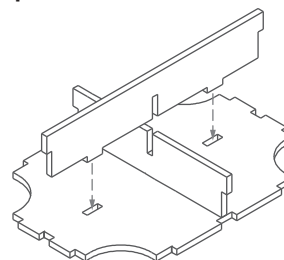
Sheet B1



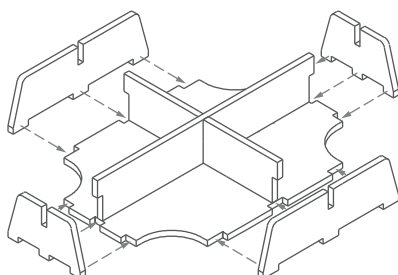
Step 1



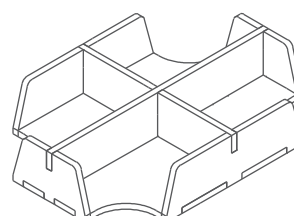
Step 2



Step 3

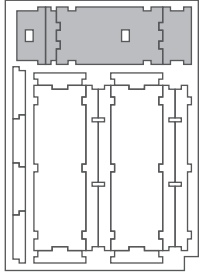


Finished tray

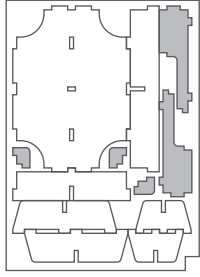


Tray 3

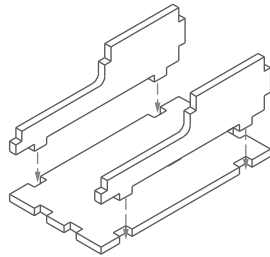
Sheet A1



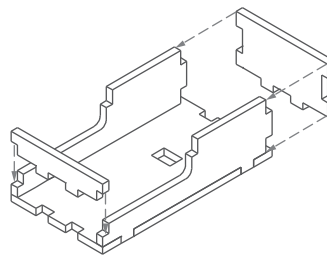
Sheet B1



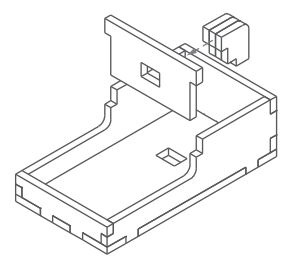
Step 1



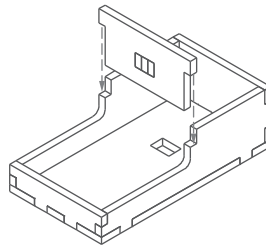
Step 2



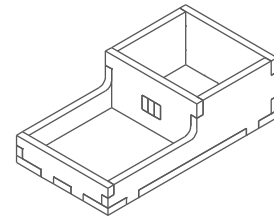
Step 3



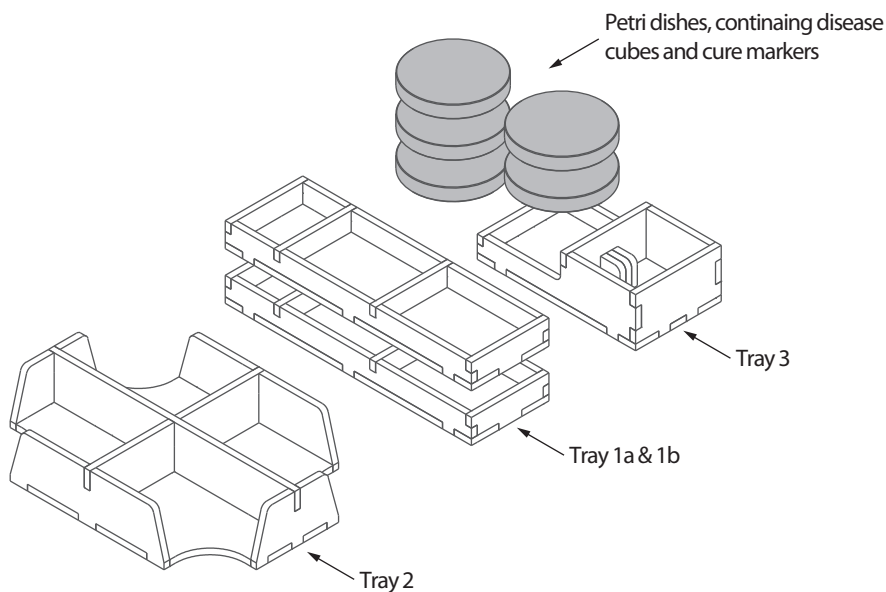
Step 4



Finished tray



FS-PND



Please check www.foldedspace.net for photos of this insert in use.

Tray legend:

Tray 1a - vaccine doses, research stations & vaccine factories, and player pawns
 Tray 1b - team research stations, infection & outbreak markers, player pawns, and transparent discs
 Tray 2 - cards
 Tray 3 - cure dials, hinterlands die, and award & quarantine markers

Note: The insert completely fills the base game box. The boards, rule books, and bio-terrorist location pad need to be stored separately in one of the expansion boxes. Note also that there is space for just one set of 24 purple disease cubes and associated purple cure marker. All the disease cubes and cure markers are stored inside the differently coloured petri dishes.