

Assembly Instructions

The package contains 3 sheets, two identical and one different sheet.

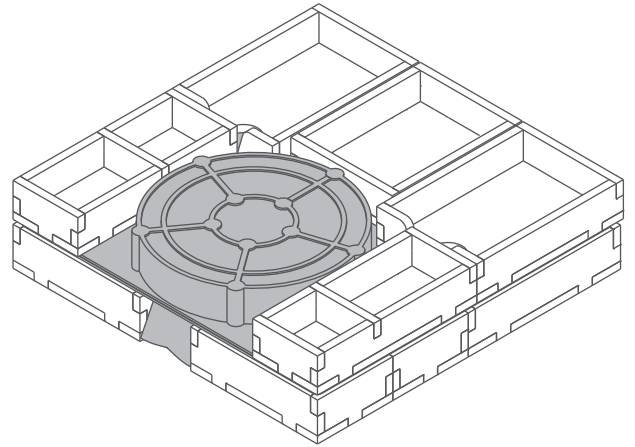
After assembly the trays are put in two layers in the original game box.

Ordinary PVA glue is required when assembling each tray.

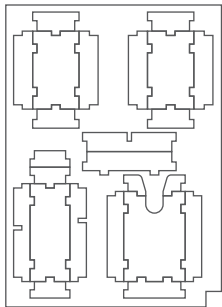
Please make sure you dry-assemble each tray correctly before gluing it together.

Please check www.foldedspace.net for general assembly tips.

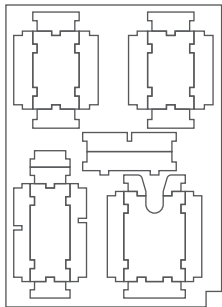
FS-VIS



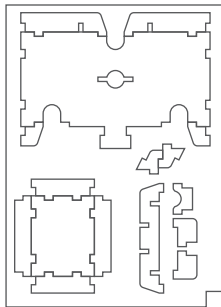
Sheet A1



Sheet A2

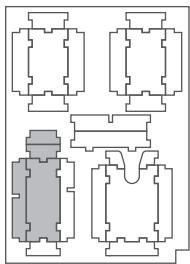


Sheet B1

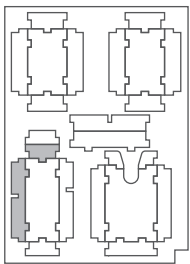


Tray 1a

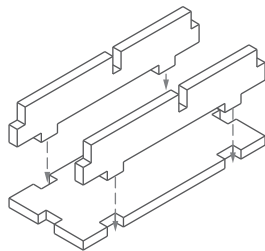
Sheet A1



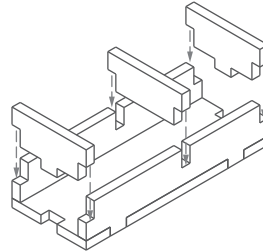
Sheet A2



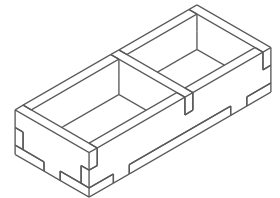
Step 1



Step 2

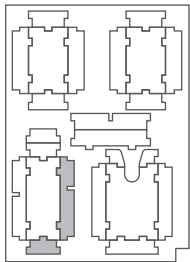


Finished tray

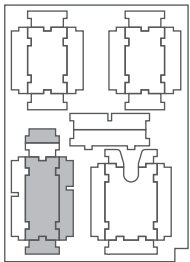


Tray 1b

Sheet A1

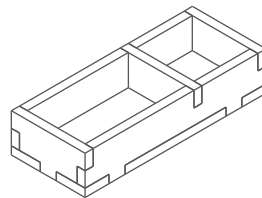


Sheet A2



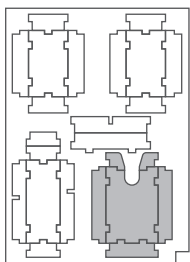
To assemble
repeat steps
of Tray 1a.

Finished tray

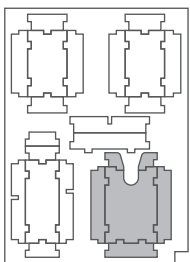


Tray 2a & 2b (the trays are identical)

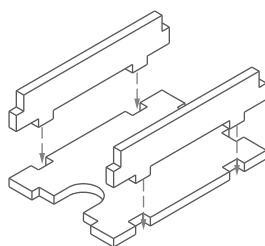
Sheet A1



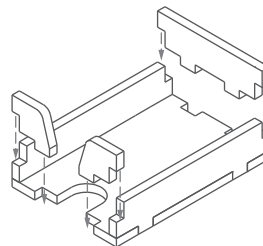
Sheet A2



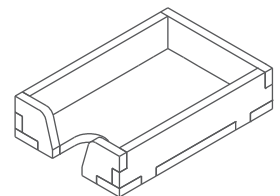
Step 1



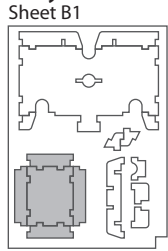
Step 2



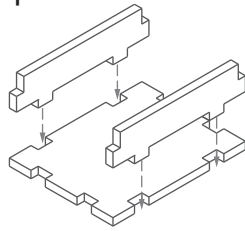
Finished tray



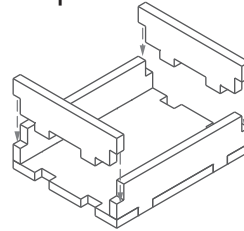
Tray 3



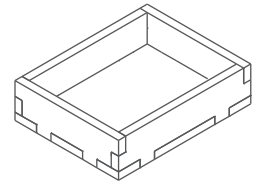
Step 1



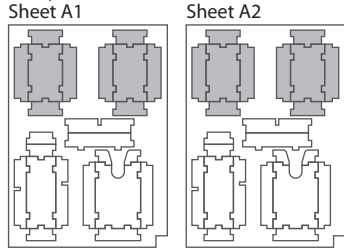
Step 2



Finished tray

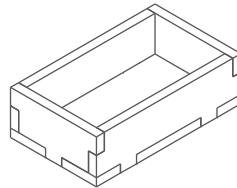


Tray 4a, 4b, 4c & 4d (the trays are identical)

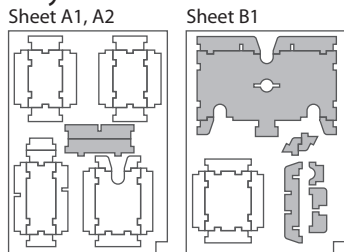


To assemble repeat steps of Tray 3.

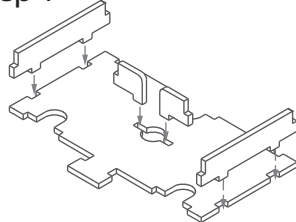
Finished tray



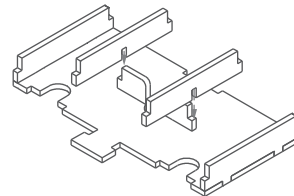
Tray 5



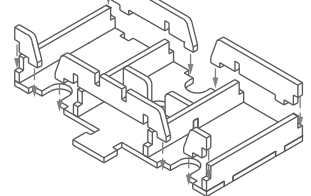
Step 1



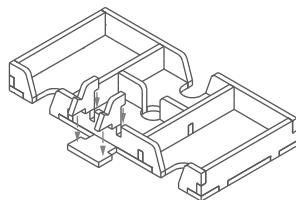
Step 2



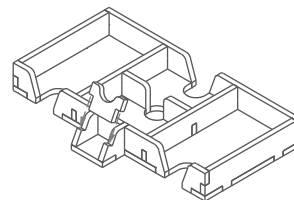
Step 3



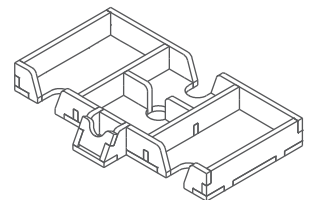
Step 4



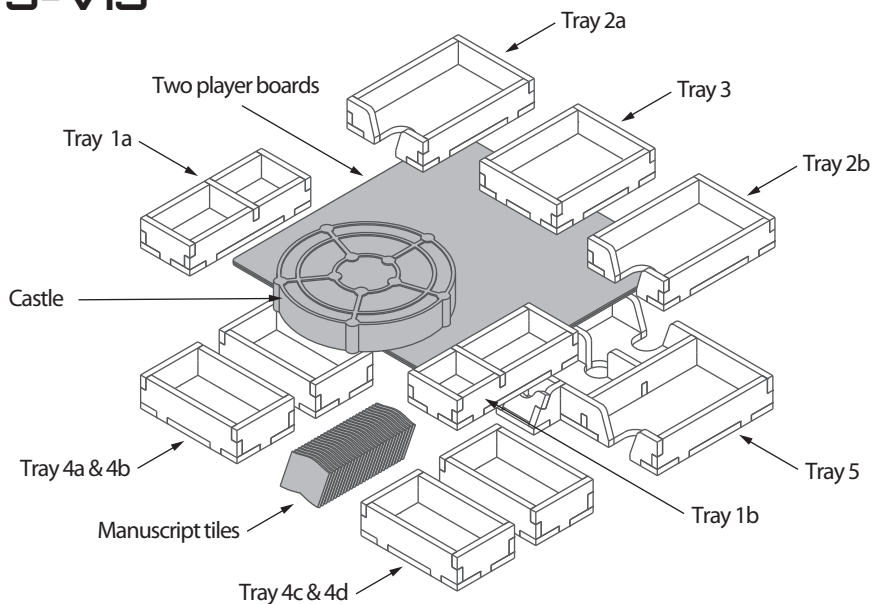
Step 5



Finished tray



FS-VIS



Please check www.foldedspace.net for photos of this insert in use.

Tray legend:

- Tray 1a - stone and ink wells
- Tray 1b - gold and corruption & virtue markers
- Tray 2a - scheme, player and other large cards
- Tray 2b - starting townsfolk cards
- Tray 3 - silver coins (metal or cardboard)
- Tray 4a, b, c, d - player pieces
- Tray 5 - remaining townsfolk cards & small cards

Note: the manuscript tiles do not have a dedicated tray, they are placed as shown between the player piece trays leaning on Tray 5. Two player boards are placed on top of the bottom layer, before adding the top layer and castle. The viscount meeples are placed underneath the castle.