

# FS-CLANv2 insert compatible with Clans of Caledonia®



## Assembly Instructions

## FS-CLANv2

The package contains 3 sheets, two identical sheets plus one different sheet.

After assembly the trays are put in two layers in the original game box.

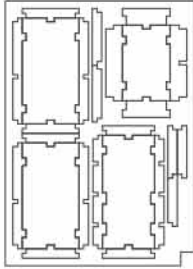
Ordinary PVA glue is required when assembling each tray.

Please make sure you dry-assemble each tray correctly before gluing it together.

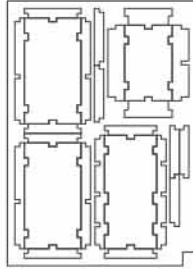
Please check [www.foldedspace.net](http://www.foldedspace.net) for general assembly tips.

Insert works with both editions of the game, with 10 cm wide player boards (variant A), and with 13 cm wide boards (variant B). Please check your version prior to assembly.

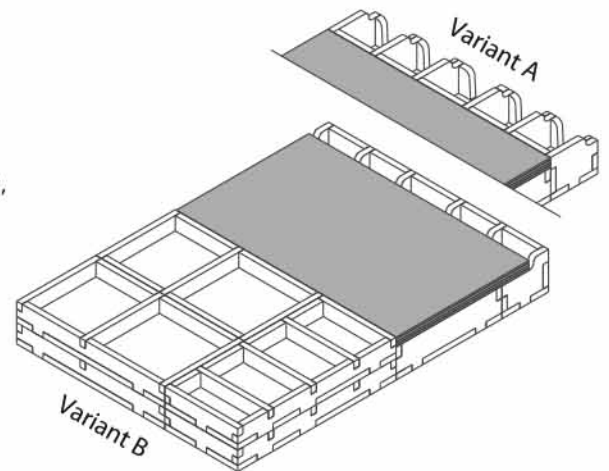
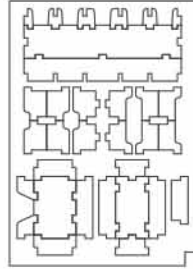
Sheet A1



Sheet A2

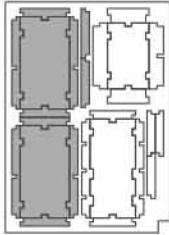


Sheet B1

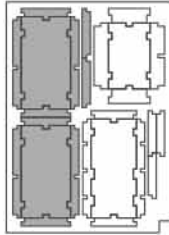


### Tray 1a, 1b, 1c & 1d (the trays are identical)

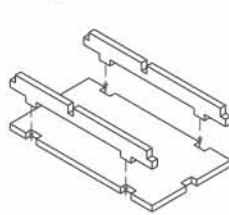
Sheet A1



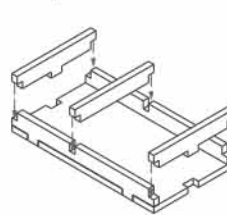
Sheet A2



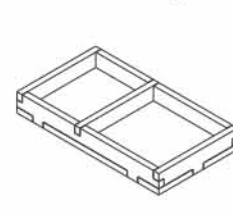
Step 1



Step 2

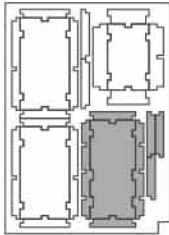


Finished tray

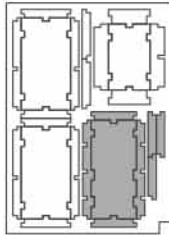


### Tray 2a & 2b (the trays are identical)

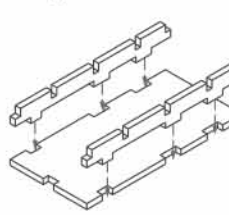
Sheet A1



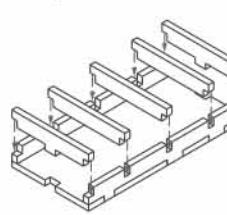
Sheet A2



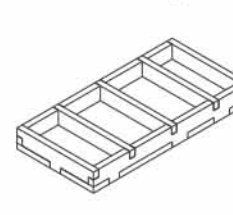
Step 1



Step 2

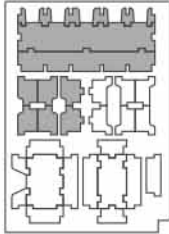


Finished tray

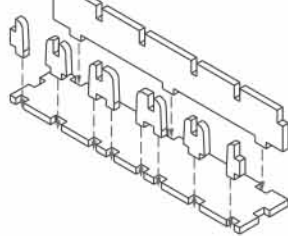


### Tray 3 variant A (for 10cm wide player boards)

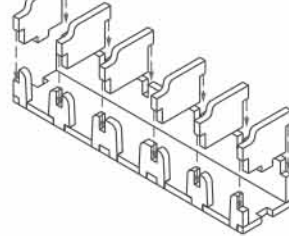
Sheet B1



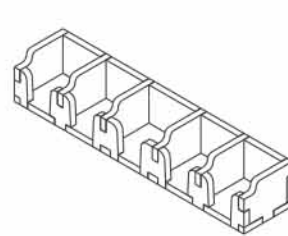
Step 1



Step 2

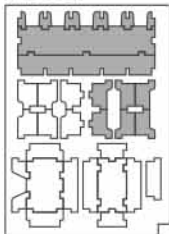


Finished tray

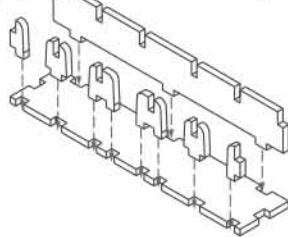


### Tray 3 variant B (for 13cm wide player boards)

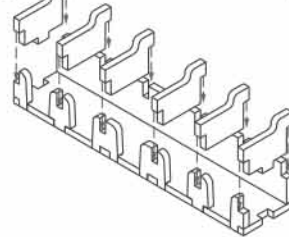
Sheet B1



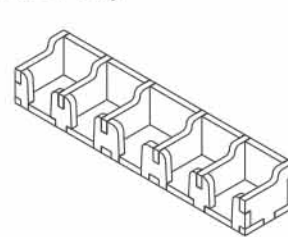
Step 1



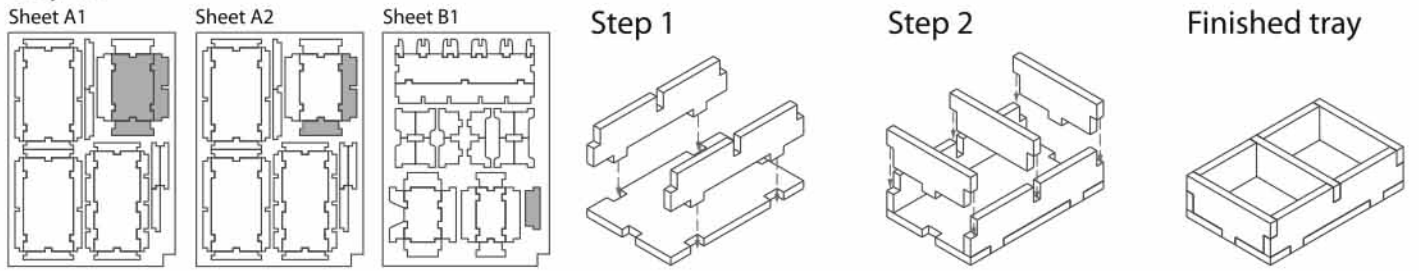
Step 2



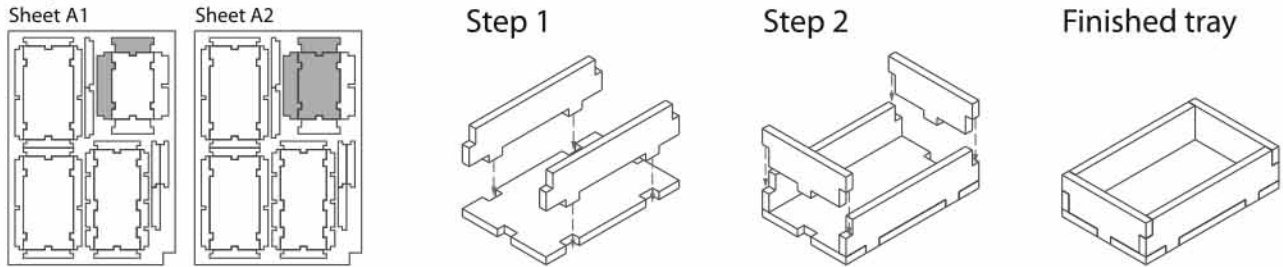
Finished tray



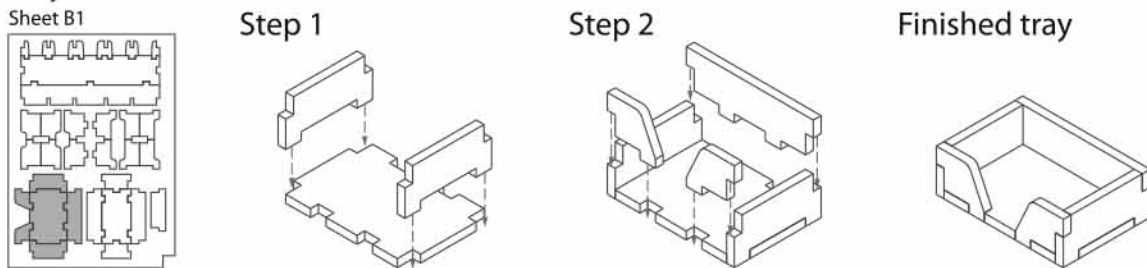
**Tray 4a**



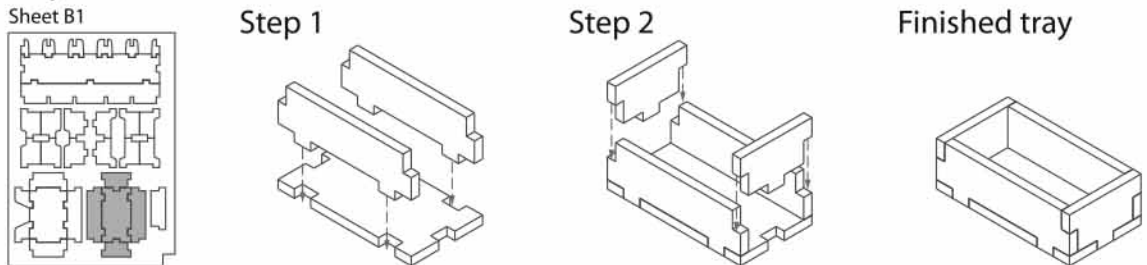
**Tray 4b**



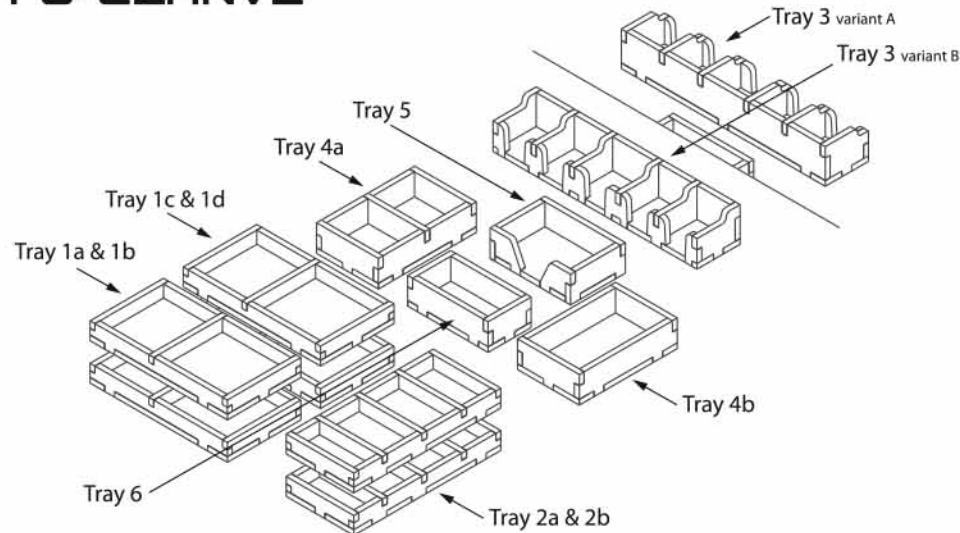
**Tray 5**



**Tray 6**



**FS-CLANv2**



Please check [www.foldedspace.net](http://www.foldedspace.net) for photos of this insert in use.

**Tray legend:**

- Tray 1a, b, c, d - clan components
- Tray 2a - goods tokens & starting tiles
- Tray 2b - goods tokens & goods tiles
- Tray 3 - export contract tiles
- Tray 4a - scoring tiles, port bonus tiles, dice & other tokens
- Tray 4b - coins
- Tray 5 - clan tiles
- Tray 6 - coins