

FS-DIN insert compatible with Dinosaur Island Extreme Edition®.



This same insert is also compatible with the Totally Liquid Extreme Edition® expansion.

Assembly Instructions

The package contains 4 sheets, two of them are identical to the other two.

The parts marked in sheets A2, B2 are to be discarded.

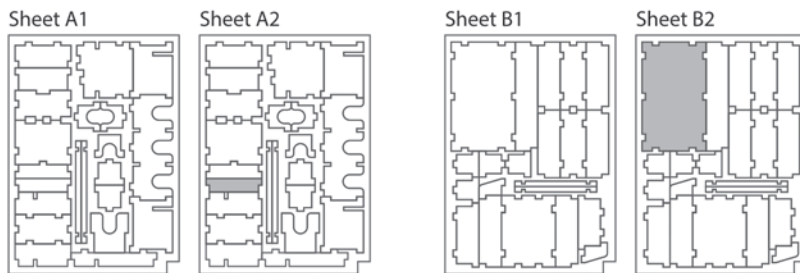
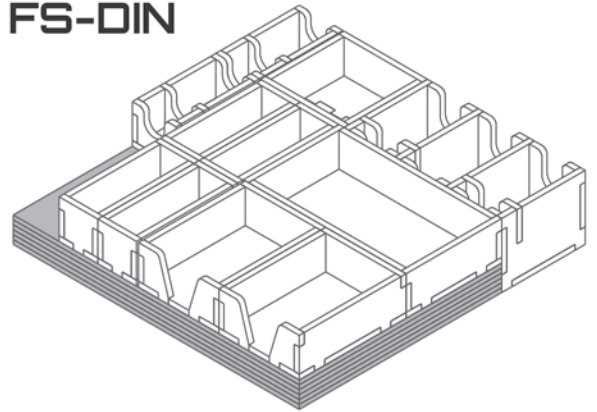
After assembly the trays are put in two layers in the original game box.

Ordinary PVA glue is required when assembling each tray.

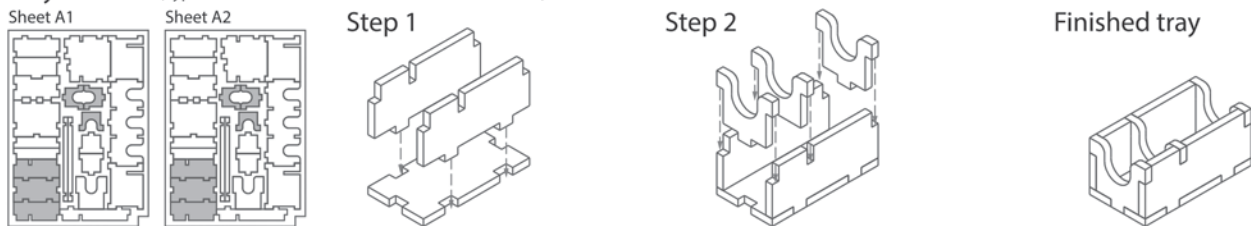
Please make sure you dry-assemble each tray correctly before gluing it together.

Please check www.foldedspace.net for general assembly tips.

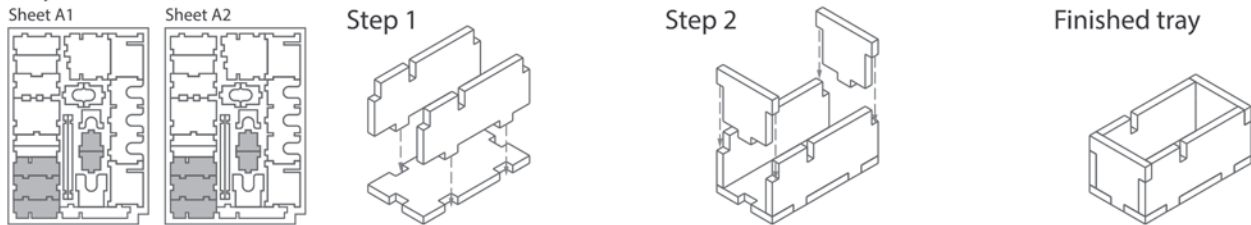
FS-DIN



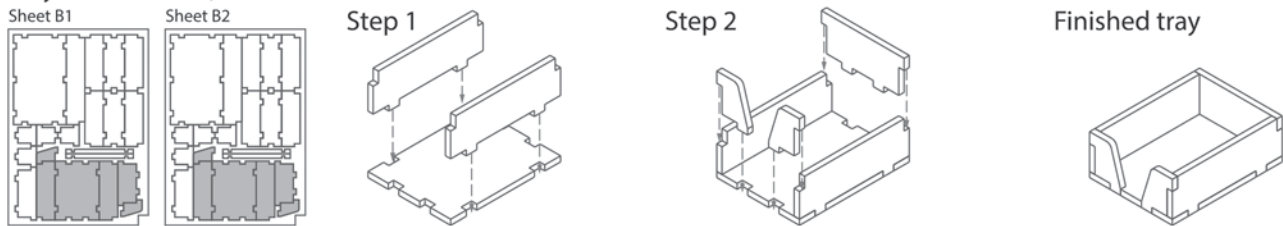
Tray 1a & 1b (Type 1 - for use in Dinosaur Island Extreme Edition®)



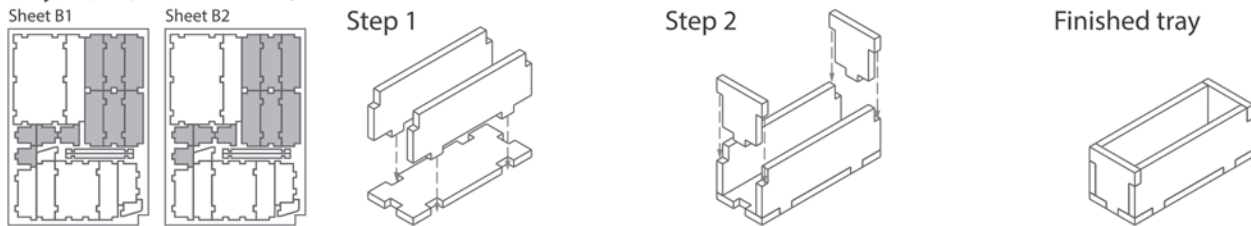
Tray 1a & 1b (Type 2 - for use in Totally Liquid Extreme Edition® expansion)



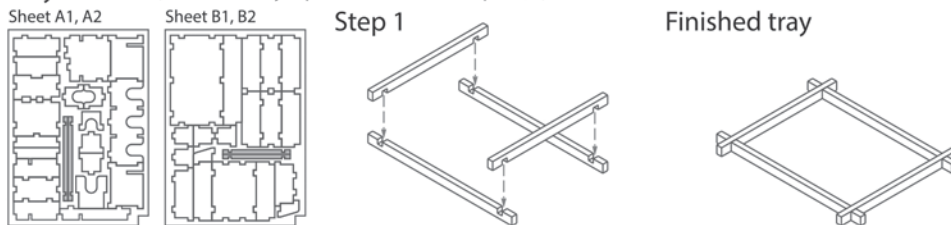
Tray 2a & 2b (the trays are identical)



Tray 3a, 3b, 3c & 3d (the trays are identical)

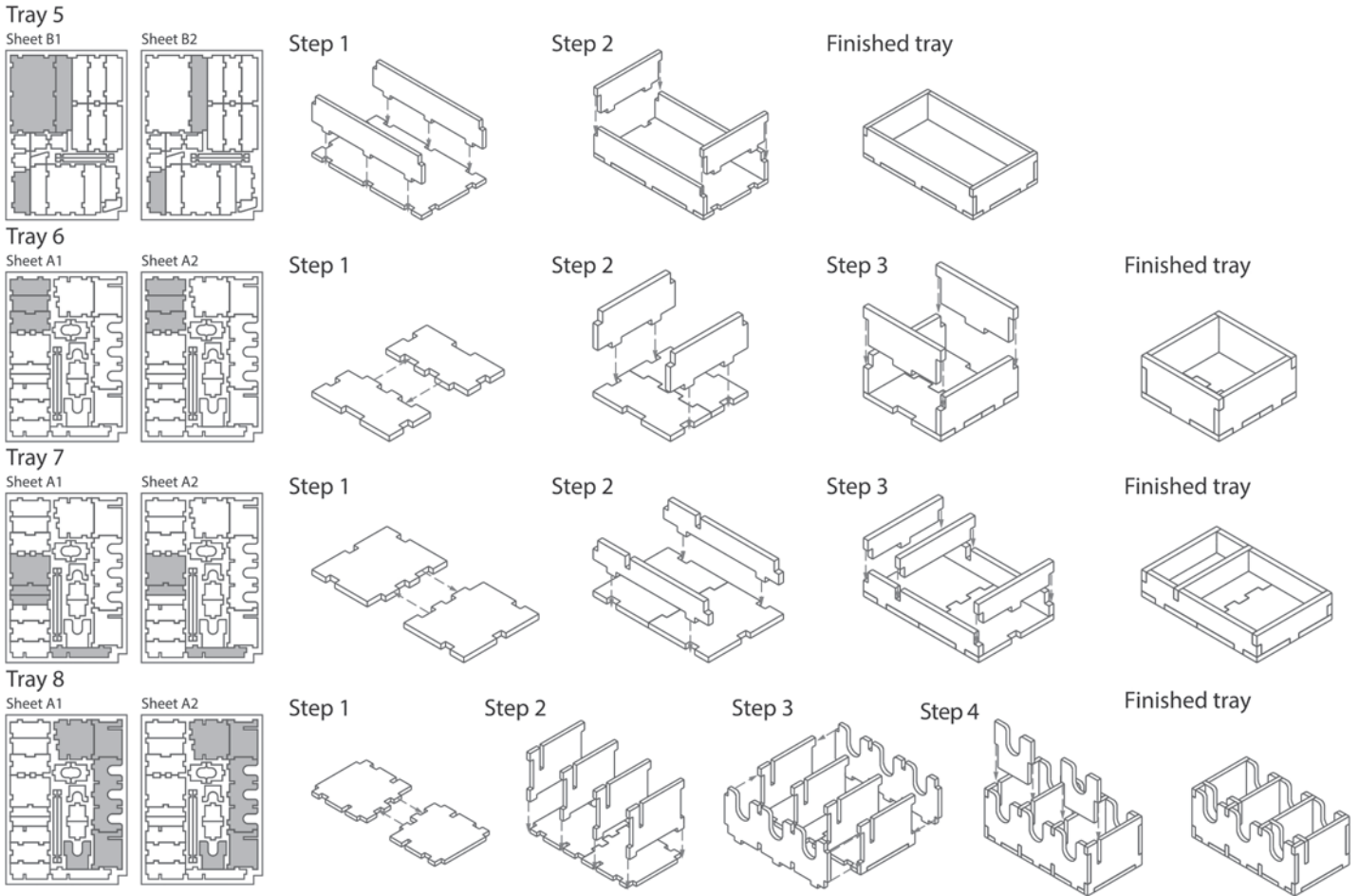


Tray 4a & 4b (for use in Totally Liquid Extreme Edition® expansion)



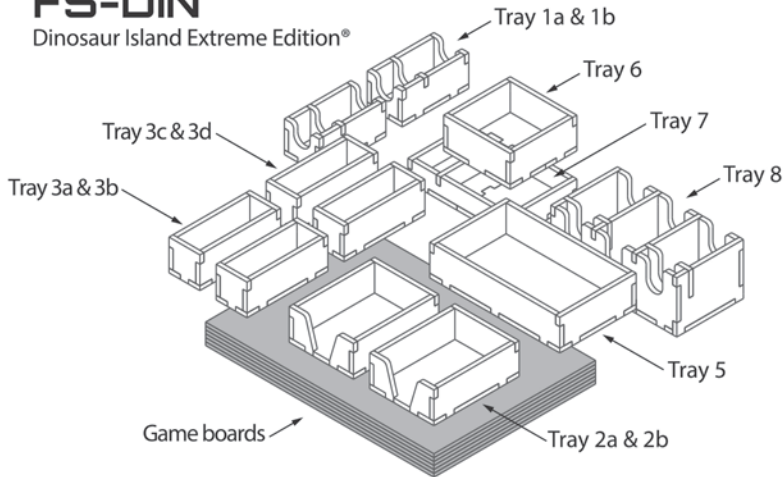
FS-DIN insert compatible with Dinosaur Island Extreme Edition®.

This same insert is also compatible with the Totally Liquid Extreme Edition® expansion.



FS-DIN

Dinosaur Island Extreme Edition®



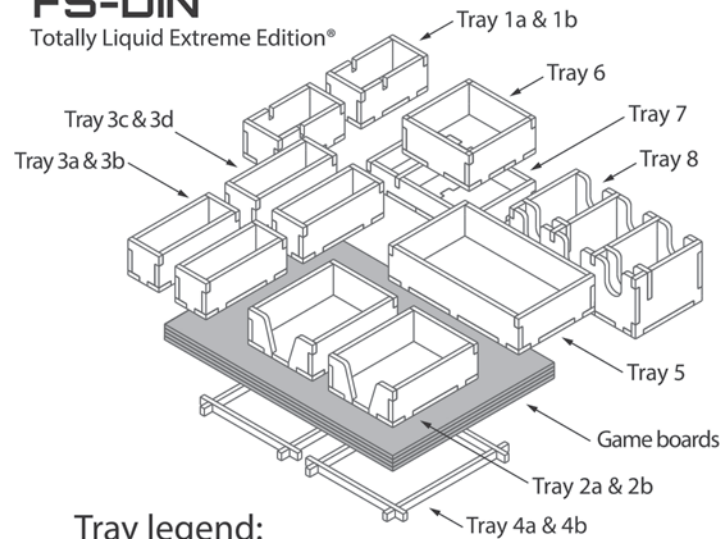
Tray legend:

- Tray 1a, b - coins
- Tray 2a, b - cards
- Tray 3a, b, c, d - player pieces
- Tray 5 - dinosaurs
- Tray 6 - visitor meeples
- Tray 7 - dice & VIP visitors
- Tray 8 - lab upgrades, paddocks & attraction tiles

Please check www.foldedspace.net for photos of this insert in use.

FS-DIN

Totally Liquid Extreme Edition®



Tray legend:

- Tray 1a, b - executives & other plastic pieces
- Tray 2a, b - cards
- Tray 3a, b - player pieces & card tokens
- Tray 3c, d - small dinosaurs & pandasaurus
- Tray 5 - dinosaurs
- Tray 6 - spare dinosaurs
- Tray 7 - dice, marker cubes & mega rex
- Tray 8 - lab upgrades, paddocks & attraction tiles

Tip: Keep the instructions in the bottom of your board game box as a reminder of how the insert fits together.