

# FS-SWR insert

compatible with Star Wars Rebellion®,  
incl. the Rise of the Empire® expansion



## Assembly Instructions

The package contains 10 sheets, five of them are identical to the other five.

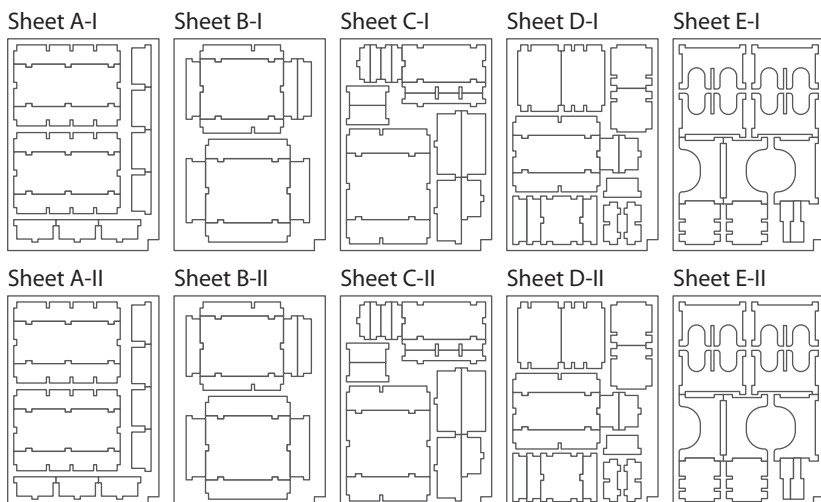
Most trays are standard trays with 0, 1, 2 or 3 middle dividers and are assembled in identical ways.

After assembly the trays are put in layers in the original game box.

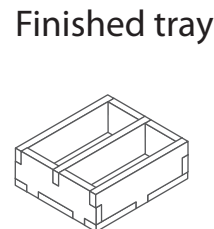
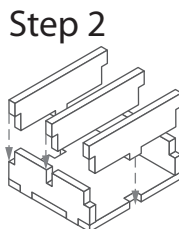
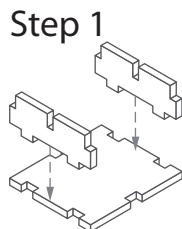
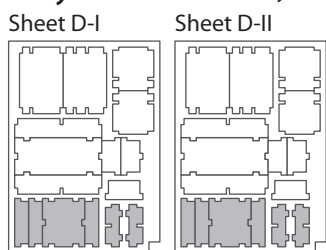
Ordinary PVA glue is required when assembling each tray, for extra strength.

Please make sure you dry-assemble each tray correctly before gluing it together.

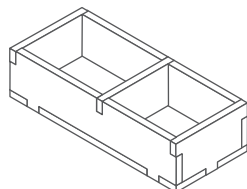
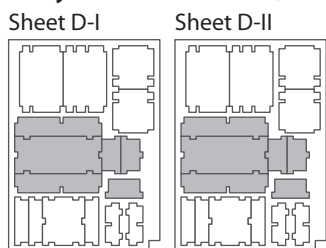
Please check [www.foldedspace.net](http://www.foldedspace.net) for general assembly tips.



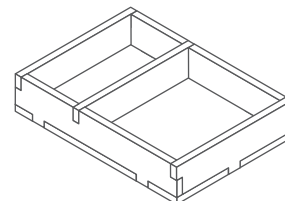
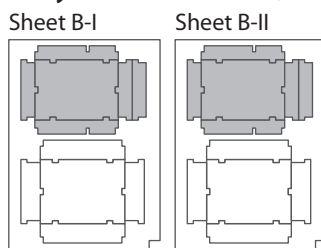
### Tray 1a & 1b (the trays are identical) - standard trays with 1 middle divider



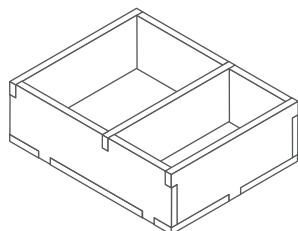
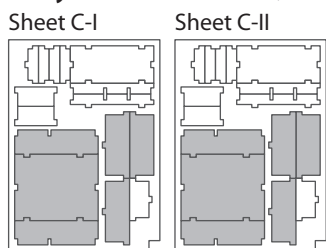
### Tray 2a & 2b (the trays are identical) - assemble as Tray 1



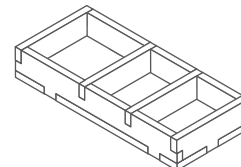
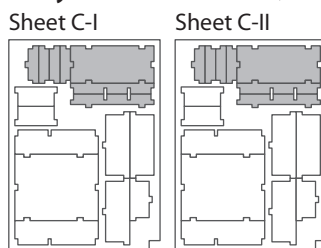
### Tray 3a & 3b (the trays are identical) - assemble as Tray 1



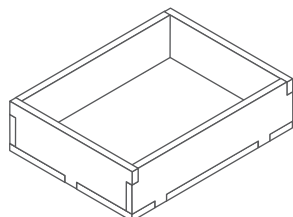
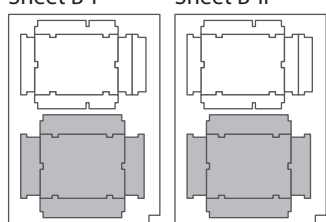
### Tray 4a & 4b (the trays are identical) - assemble as Tray 1



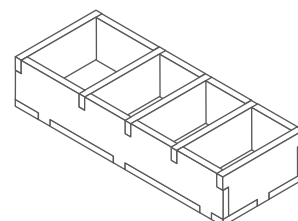
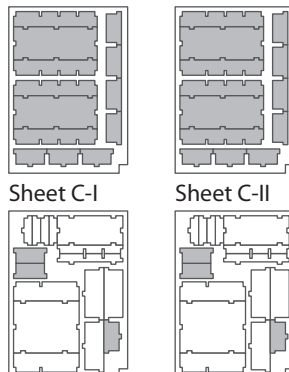
### Tray 5a & 5b (the trays are identical) - assemble as Tray 1, with 2 middle dividers



### Tray 6a & 6b (the trays are identical) - assemble as Tray 1, with 0 middle dividers

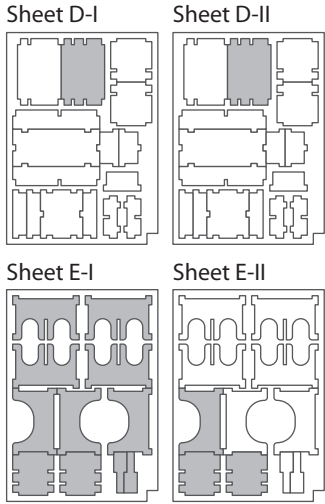


### Tray 7a, b, c & d (the trays are identical) - assemble as Tray 1, with 3 middle dividers

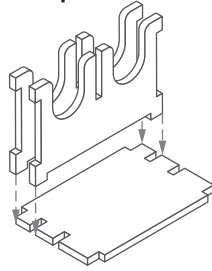


**Tip:** Keep the instructions in the bottom of your board game box as a reminder of how the insert fits together.

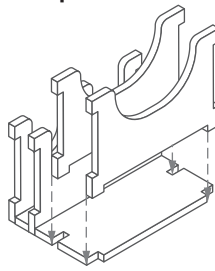
**Tray 8a & 8b (identical)**



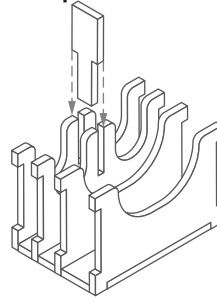
**Step 1**



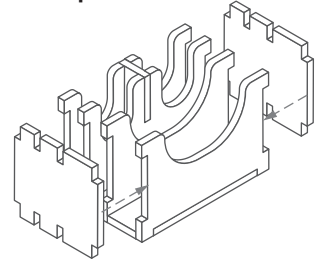
**Step 2**



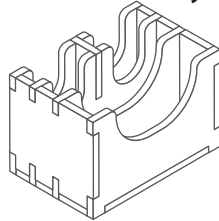
**Step 3**



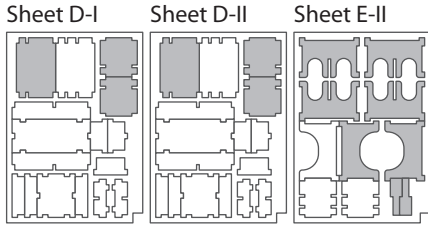
**Step 4**



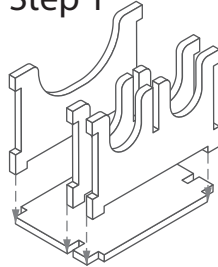
**Finished tray**



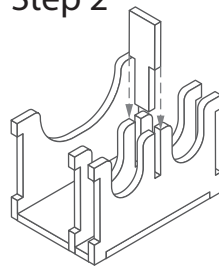
**Tray 9a & 9b (identical)**



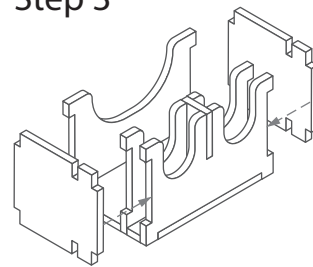
**Step 1**



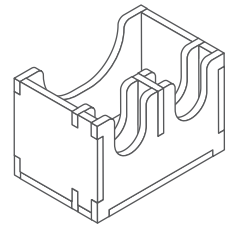
**Step 2**



**Step 3**

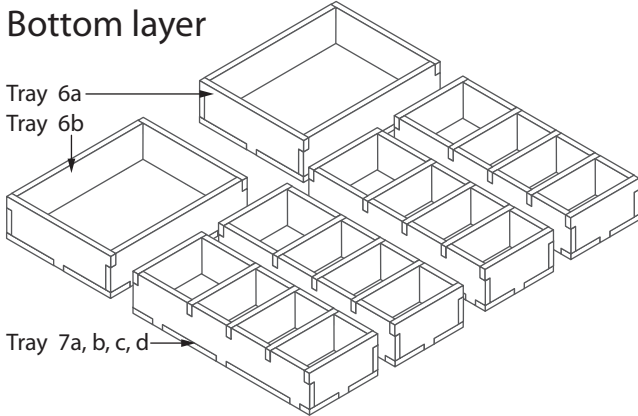


**Finished tray**

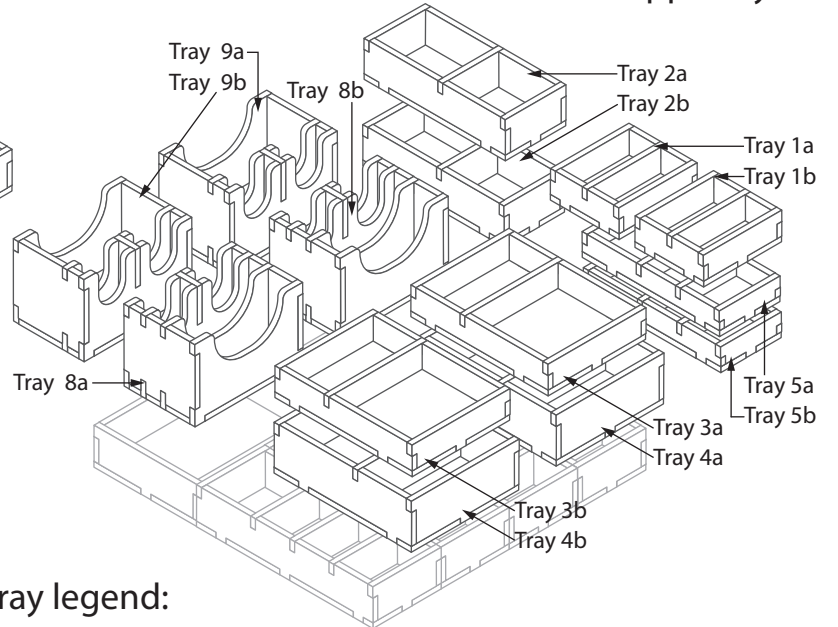


**FS-SWR**

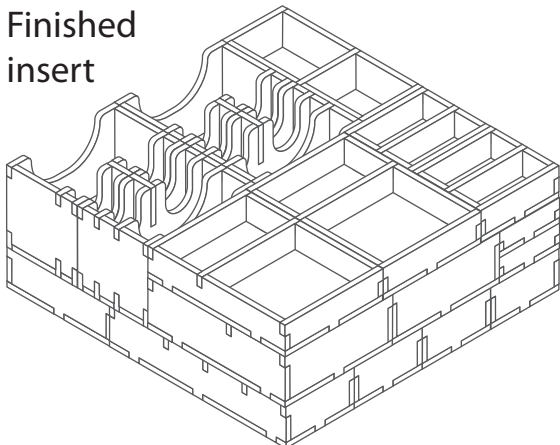
**Bottom layer**



**Upper layers**



**Finished insert**



**Tray legend:**

- Tray 1a - dice and sabotage markers
- Tray 1b - rebel loyalty and target markers
- Tray 2a, b - imperial forces, and subjugation/imperial loyalty markers
- Tray 3a - attachment rings and damage markers
- Tray 3b - dice and destroyed systems
- Tray 4a, 4b, 5a, 5b - imperial forces
- Tray 6a - rebel leaders
- Tray 6b - imperial leaders
- Tray 7a, b, c, d - rebel forces
- Tray 8a - objective and probe cards
- Tray 8b - tactic and advanced tactic cards
- Tray 9a - rebel mission and action cards
- Tray 9b - imperial mission and action cards