

FS-TI4 insert

compatible with Twilight Imperium 4th Edition®,
and has space provided for future expansions.



Assembly Instructions

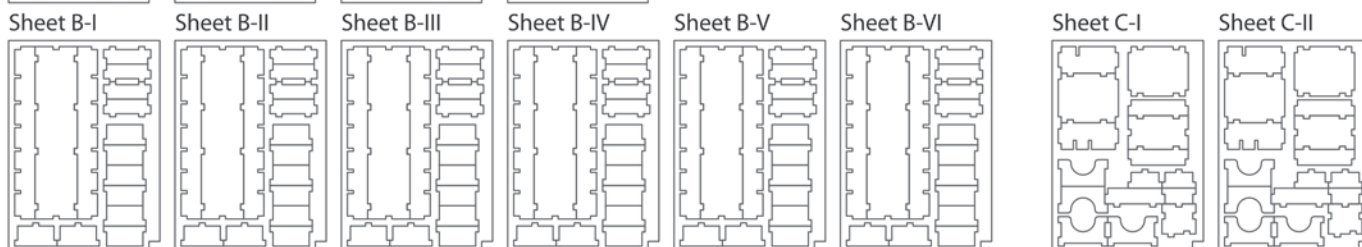
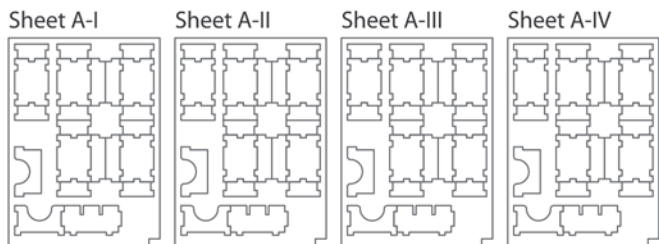
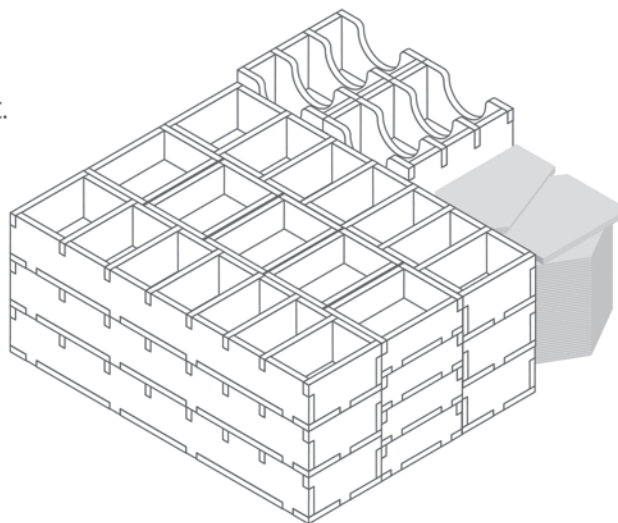
The package contains 12 sheets, four of Sheet A, six of Sheet B, and two of Sheet C.

After assembly the trays are put in layers in the original game box.

Ordinary PVA glue is required when assembling each tray, for extra strength.

Please make sure you dry-assemble each tray correctly before gluing it together.

Please check www.foldedspace.net for general assembly tips.



Tray A1 to A20 (the twenty trays are identical)

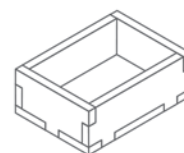
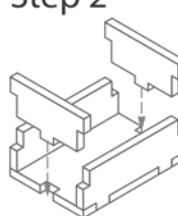
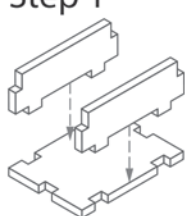
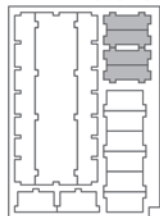
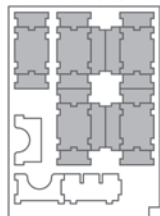
Sheet A-I, II, III, IV

Sheet B-I, II, III, IV, V, VI

Step 1

Step 2

Finished tray



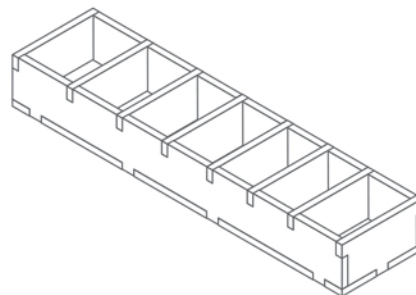
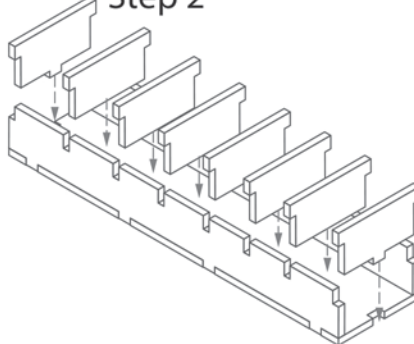
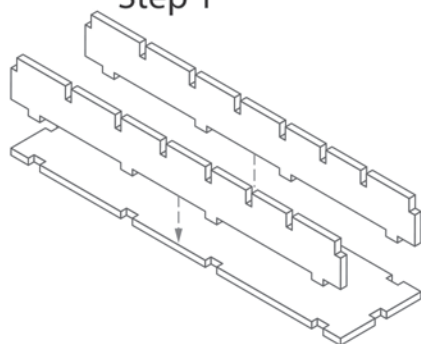
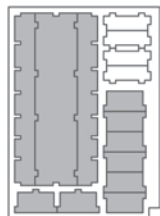
Tray B1 to B6 (the six trays are identical)

Sheet B-I to B-VI

Step 1

Step 2

Finished tray



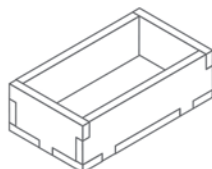
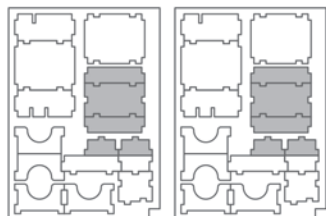
Tray C1 & C2 (the trays are identical)

Sheet C-I

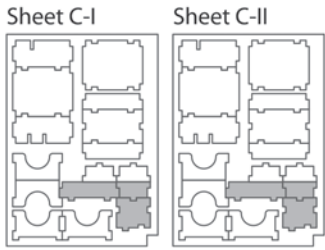
Sheet C-II

Assemble
as trays A.

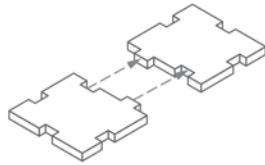
Finished tray



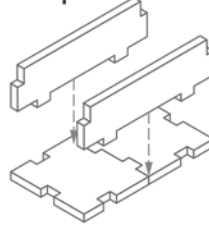
Tray D



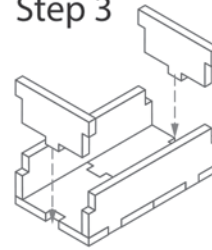
Step 1



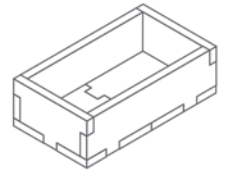
Step 2



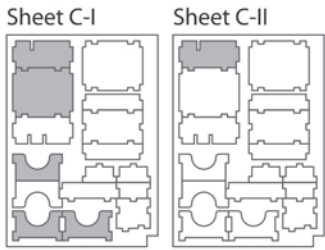
Step 3



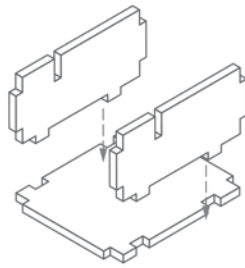
Finished tray



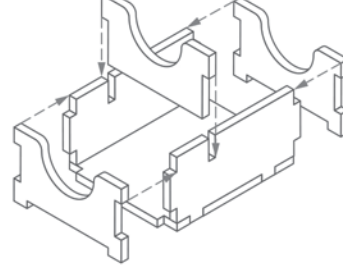
Tray E



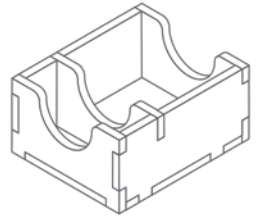
Step 1



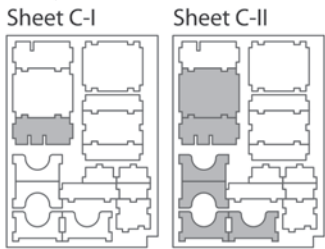
Step 2



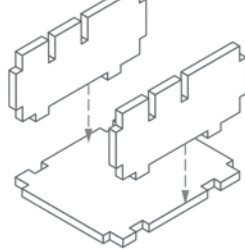
Finished tray



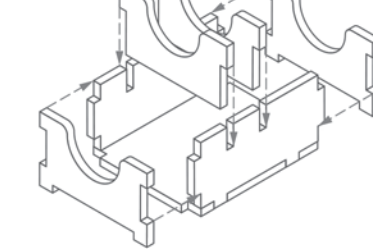
Tray F



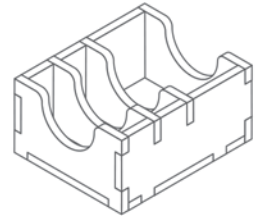
Step 1



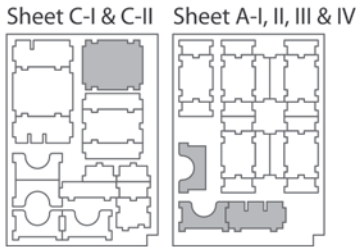
Step 2



Finished tray

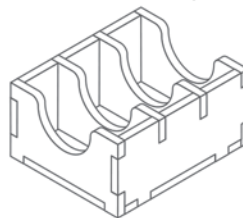


Tray G1 & G2 (the trays are identical)



Assemble as Tray F.

Finished tray



Tip:

Keep the instructions in the bottom of your board game box as a reminder of how the insert fits together.

Please check www.foldedspace.net for photos of this insert in use.

FS-TI4

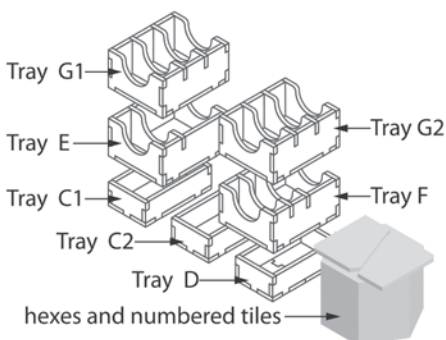
Tray legend:

Tray A1-A17 - faction tokens and cards
 Tray A18 - dice
 Tray A19, A20 - other tokens
 Tray B1-B6 - player unit pieces

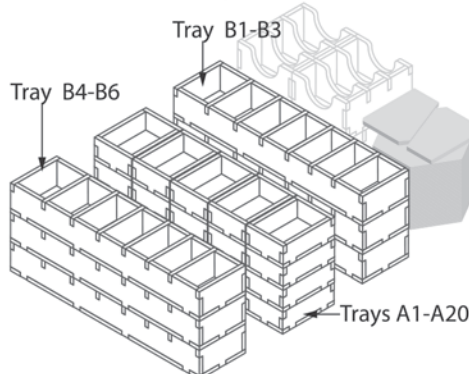
Tray C1 - trade tokens
 Tray C2 - infantry tokens
 Tray D - fighter tokens
 Tray E - action and planet cards
 Tray F - agenda and objective cards
 Tray G1, G2 - player card decks

Note: The insert does not fully fill the game box. Space is provided for future expansions for which there will be a new insert.

Rear column



Front columns



Finished insert

