

FS-7WO insert compatible with 7 Wonders[®],

incl. the Babel[®], Wonder Pack[®], Cities[®], and Leaders[®] expansions



Assembly Instructions

The package contains 4 sheets, two of them are identical to the other two.

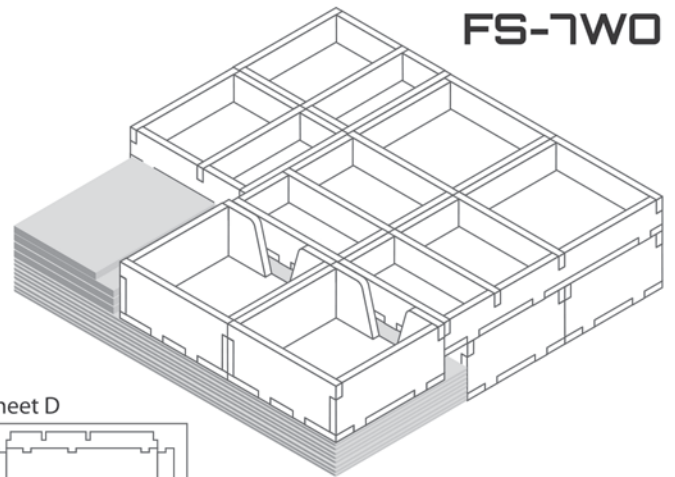
Each tray is doubled or quadrupled.

After assembly the trays are put in two layers in the original game box.

Ordinary PVA glue is required when assembling each tray, for extra strength.

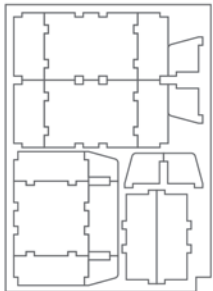
Please make sure you dry-assemble each tray correctly before gluing it together.

Please check www.foldedspace.net for general assembly tips.

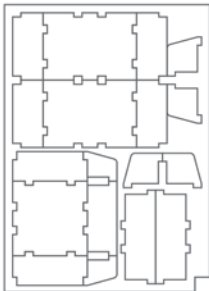


FS-7WO

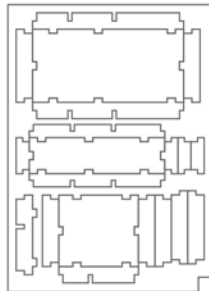
Sheet A



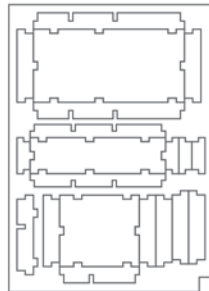
Sheet B



Sheet C

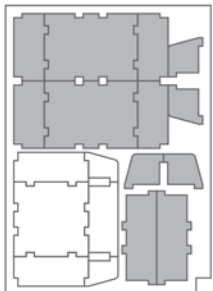


Sheet D

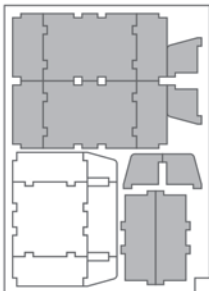


Tray 1a, 1b, 1c & 1d (the trays are identical)

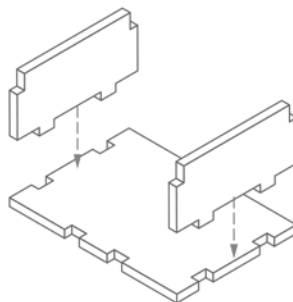
Sheet A



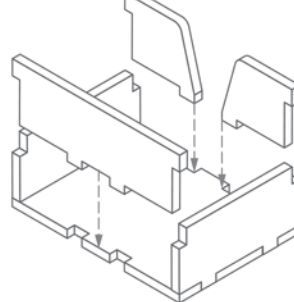
Sheet B



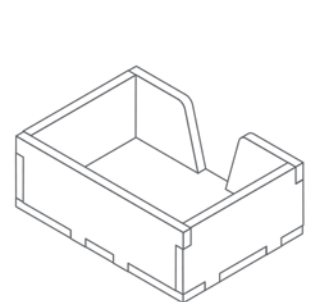
Step 1



Step 2

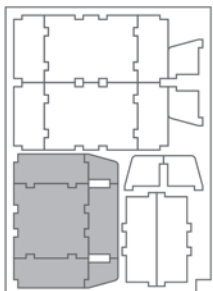


Finished tray

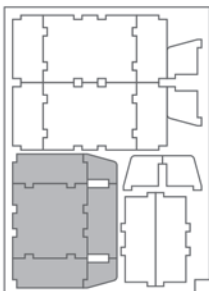


Tray 2a & 2b (the trays are identical)

Sheet A

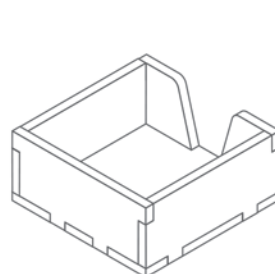


Sheet B



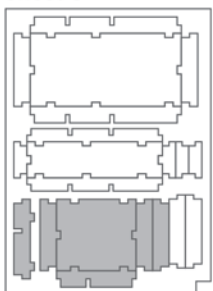
To assemble
repeat steps
for Tray 1.

Finished tray

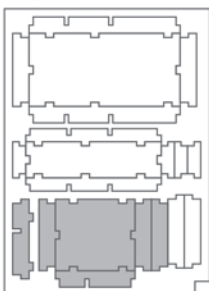


Tray 3a & 3b (the trays are identical)

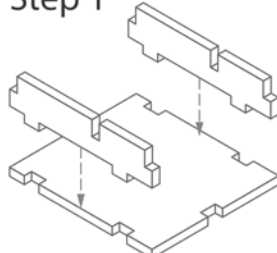
Sheet C



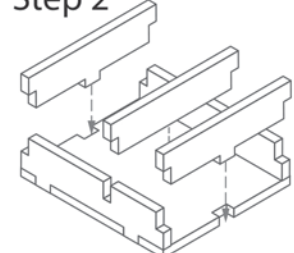
Sheet D



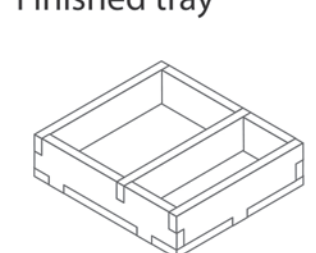
Step 1



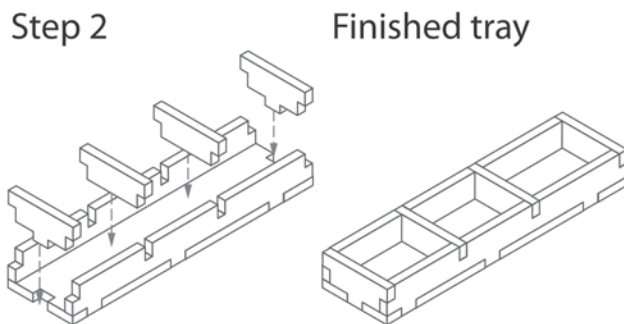
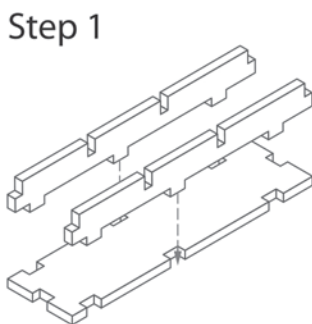
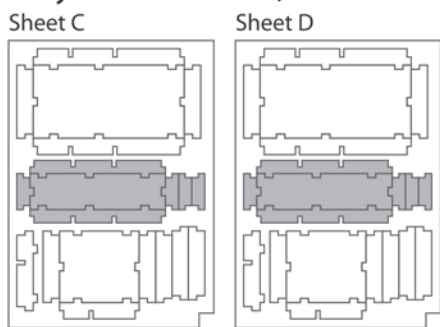
Step 2



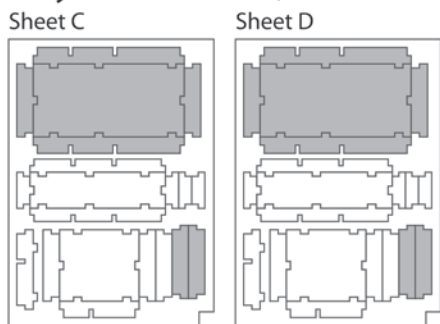
Finished tray



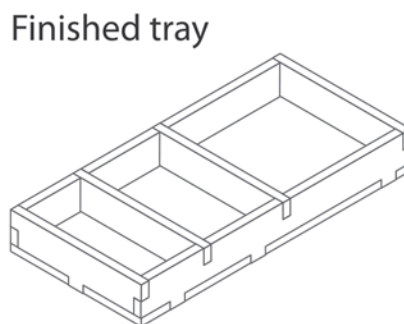
Tray 4a & 4b (the trays are identical)



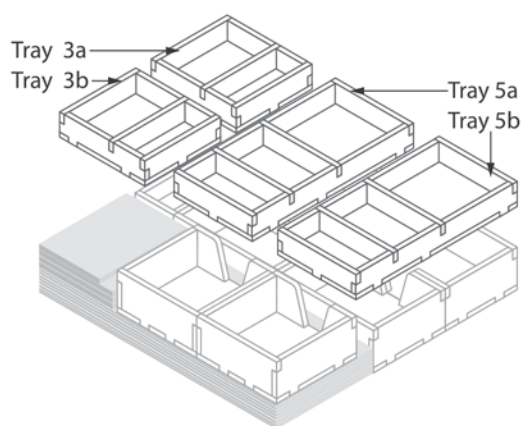
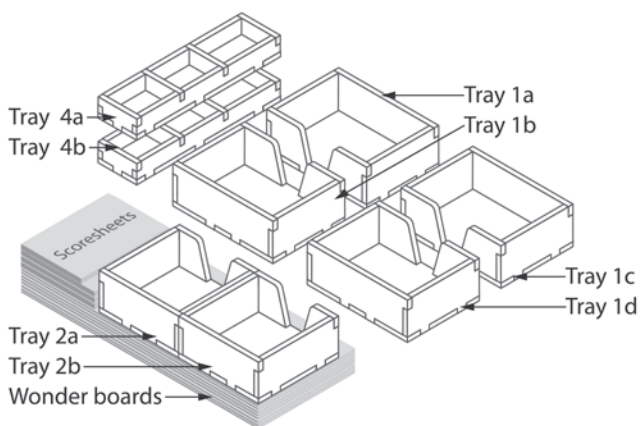
Tray 5a & 5b (the trays are identical)



To assemble
repeat steps
for Tray 4.



FS-7WO

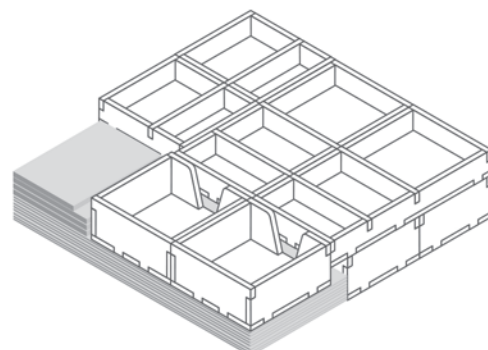


Tray legend:

- Tray 1a - age I cards
- Tray 1b - age II cards
- Tray 1c - age III cards
- Tray 1d - leader, guild and other cards
- Tray 2a - Babel tiles
- Tray 2b - Babel tiles
- Tray 3a - coin tokens
- Tray 3b - coin tokens
- Tray 4a - small Babel expansion tokens
- Tray 4b - small Babel expansion tokens
- Tray 5a - victory, penalty and defeat tokens
- Tray 5b - shield, participation and other tokens

Note: The three diplomacy markers are placed on top of the scoresheets.

Please check www.foldedspace.net
for photos of this insert in use.



Tip: Keep the instructions in the bottom of your board game box as a reminder of how the insert fits together.